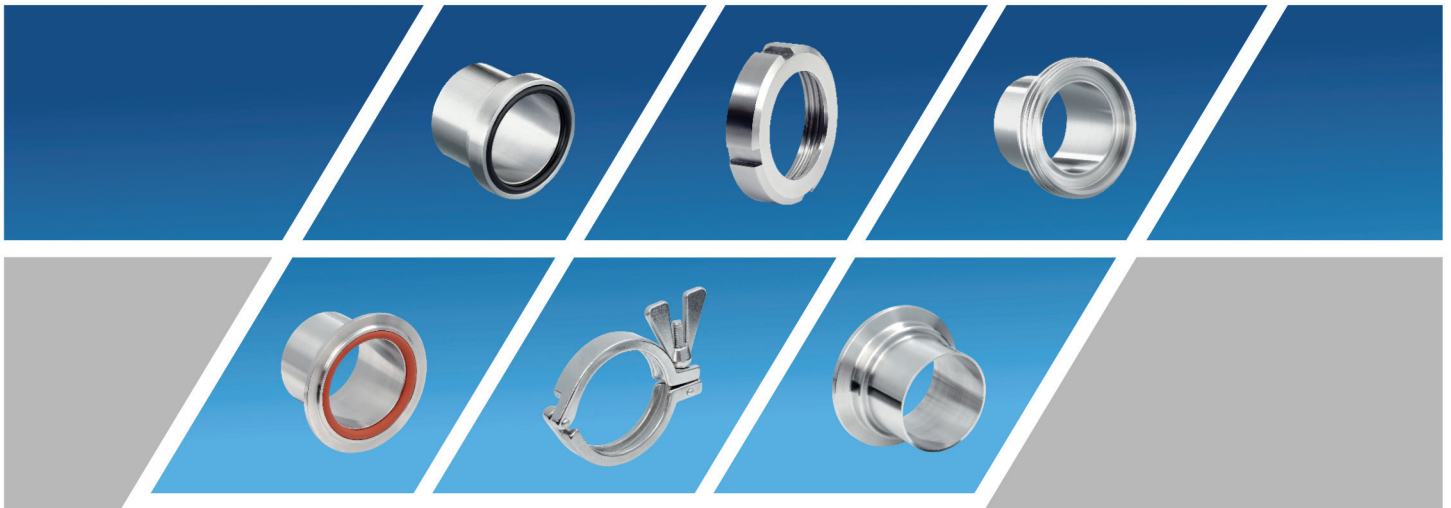


## DIN 11864 / DIN 11853



A member of NEUMO Ehrenberg Group



**Table of Contents**

Explosion View	Page	06
Aseptic–Unions DIN 11864-1 Form A for Tubes acc. to DIN 11866 (Series A)	Page	08-11
Aseptic–Flange Connections DIN 11864-2 Form A for Tubes acc. to DIN 11866 (Series A)	Page	12-13
Aseptic–Clamp Connections DIN 11864-3 Form A for Tubes acc. to DIN 11866 (Series A)	Page	14-15
Aseptic–Unions DIN 11864-1 Form A for Tubes acc. to DIN 11866 (Series B)	Page	16-19
Aseptic–Flange Connections DIN 11864-2 Form A for Tubes acc. to DIN 11866 (Series B)	Page	20-21
Aseptic–Clamp Connections DIN 11864-3 Form A for Tubes acc. to DIN 11866 (Series B)	Page	22-23
Aseptic–Unions DIN 11864-1 Form A for Tubes acc. to DIN 11866 (Series C)	Page	24-27
Aseptic–Flange Connections DIN 11864-2 Form A for Tubes acc. to DIN 11866 (Series C)	Page	28-29
Aseptic–Clamp Connections DIN 11864-3 Form A for Tubes acc. to DIN 11866 (Series C)	Page	30-31
Hygienic–Unions DIN 11853-1 for Tubes acc. to DIN 11866 (Series A)	Page	32-35
Hygienic–Flange Connections DIN 11853-2 for Tubes acc. to DIN 11866 (Series A)	Page	36-39
Hygienic–Clamp Connections DIN 11853-3 for Tubes acc. to DIN 11866 (Series A)	Page	40-43
Hygienic–Unions DIN 11853-1 for Tubes acc. to DIN 11866 (Series B)	Page	44-47
Hygienic–Flange Connections DIN 11853-2 for Tubes acc. to DIN 11866 (Series B)	Page	48-51
Hygienic–Clamp Connections DIN 11853-3 for Tubes acc. to DIN 11866 (Series B)	Page	52-55
Hygienic–Unions DIN 11853-1 for Tubes acc. to DIN 11866 (Series C)	Page	56-59
Hygienic–Flange Connections DIN 11853-2 for Tubes acc. to DIN 11866 (Series C)	Page	60-63
Hygienic–Clamp Connections DIN 11853-3 for Tubes acc. to DIN 11866 (Series C)	Page	64-67
Technical Information	Page	68-69

**The above mentioned articles are delivered with an EPDM seal.  
Other seal qualities are available upon request.**



We are certified according to ISO 9001 : 2008

## The German Standards

### DIN 11864 Part 1-3

- Fittings made of stainless steel for the aseptic, chemical and pharmaceutical industry -  
Aseptic connections, standard type

- **DIN 11864 – 1: Aseptic – Union**
- **DIN 11864 – 2: Aseptic – Flange connection**
- **DIN 11864 – 3: Aseptic – Clamp connection**

The gasket groove is manufactured to form A standard

### DIN 11853 Part 1-3

- Fittings made of stainless steel for food and chemical -  
Hygienic connections, short type

- **DIN 11853 – 1: Hygienic – Union**
- **DIN 11853 – 2: Hygienic – Flange connection**
- **DIN 11853 – 3: Hygienic – Clamp connection**

Manufactured with groove for O-Ring

are described in this catalogue.

When all technical specifications are complied with acc. to DIN 11864, the application of the new aseptic and hygienic connections will be successful. AWH has carried out extensive optimization of production and developed exact testing mechanisms to contribute to your performance improvement.

The aseptic and hygienic connections are compatible and differ in the axial length, the available materials and the assortment (the blind parts are only available as DIN 11853 version). The connections are delivered as a standard with pipe dimensions acc. to DIN 11866 series A, B and C.

In the present catalogue you will find a large amount of variants for the program of DIN 11864 and DIN 11853. For individual custom-made orders our competent team will gladly assist you, to accommodate your needs.



63-03

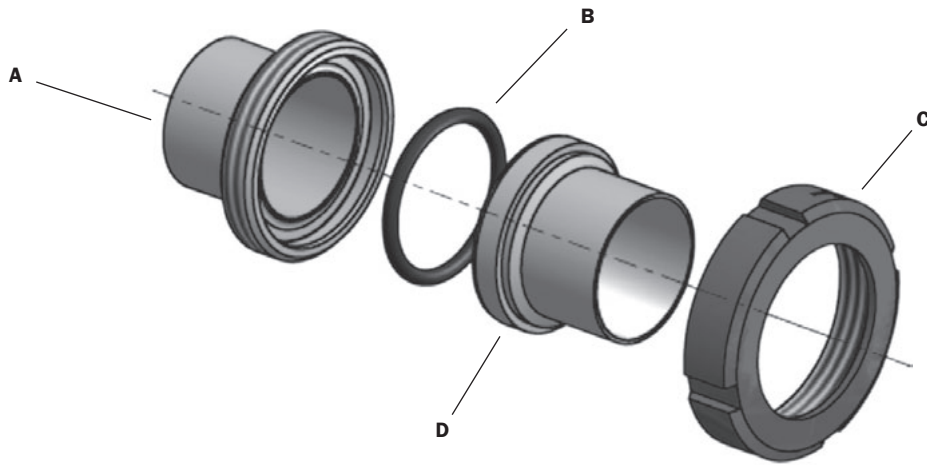
The aseptic and hygienic connections listed in this catalogue are certified according to 3-A Sanitary Standard 63-03. Additionally, we offer seal rings made of materials, which meet the demands of the 3-A Sanitary Standard 18-00.



Thanks to the affiliation with the NEUMO-EHRENBERG-GROUP, AWH provides connections of the BioConnect® and Connect S® series for more extensive hygienic requirements. Our competent team will gladly assist you if required.

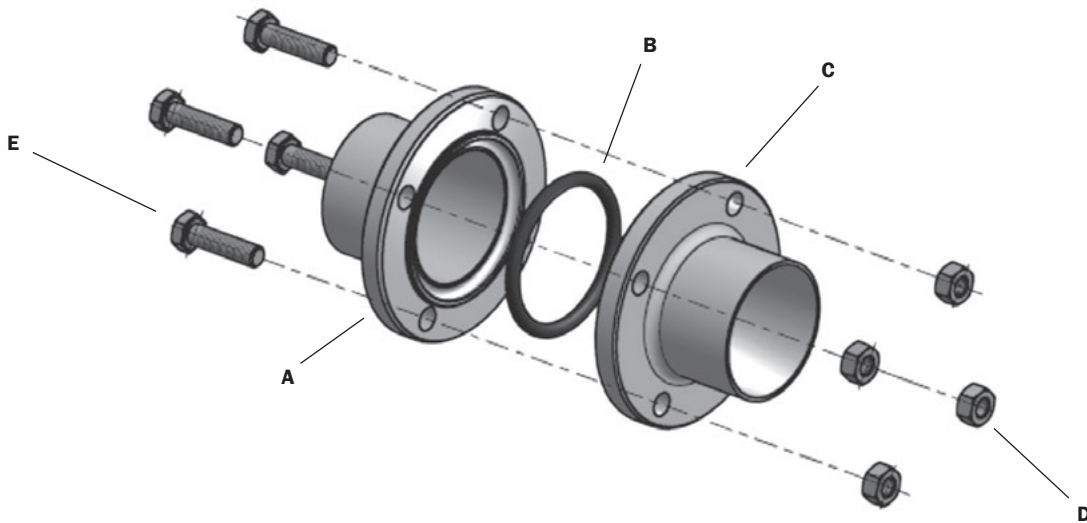
## Explosion View

### Unions



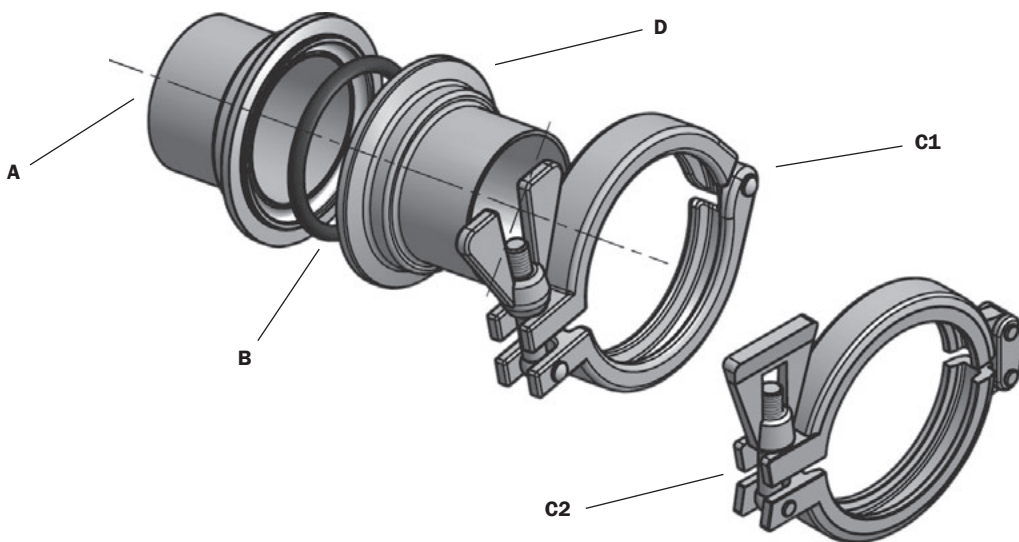
- A** Male part
- B** O-Ring
- C** Nut
- D** Liner

### Flange Connections



- A** Nut flange
- B** O-Ring
- C** Liner flange
- D** Hexagon nut
- E** Hexagon bolt

### Clamp Connections

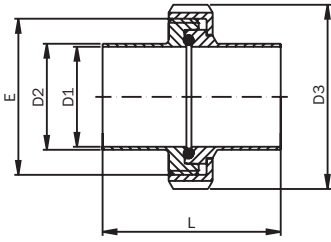


- A** Clamp nut
- B** O-Ring
- Heavy duty clamp
- C1** Single pin clamp
- C2** Double pin clamp
- D** Clamp liner



## Aseptic – Unions DIN 11864-1 Form A for Tubes acc. to DIN 11866 (Series A)

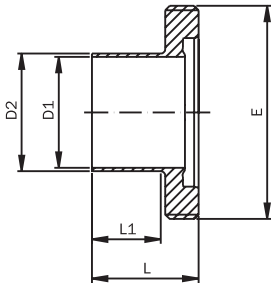
Union DIN



Is delivered in parts!

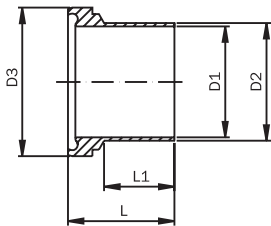
DN	D1	D2	D3	E	L	Weight [kg]
10	10	13	38	Rd 28 x 1/8"	76	0,15
15	16	19	44	Rd 34 x 1/8"	76	0,19
20	20	23	54	Rd 44 x 1/6"	76	0,31
25	26	29	63	Rd 52 x 1/6"	77	0,43
32	32	35	70	Rd 58 x 1/6"	88	0,53
40	38	41	78	Rd 65 x 1/6"	88	0,61
50	50	53	92	Rd 78 x 1/6"	89	0,80
65	66	70	112	Rd 95 x 1/6"	113	1,35
80	81	85	127	Rd 110 x 1/4"	117	1,89
100	100	104	148	Rd 130 x 1/4"	120	2,46

Male DIN



DN	D1	D2	E	L	L1	Weight [kg]
10	10	13	Rd 28 x 1/8"	41	27	0,05
15	16	19	Rd 34 x 1/8"	41	27	0,07
20	20	23	Rd 44 x 1/6"	43	26	0,13
25	26	29	Rd 52 x 1/6"	43	26	0,16
32	32	35	Rd 58 x 1/6"	48	32	0,18
40	38	41	Rd 65 x 1/6"	48	31	0,22
50	50	53	Rd 78 x 1/6"	48	30	0,28
65	66	70	Rd 95 x 1/6"	60	40	0,45
80	81	85	Rd 110 x 1/4"	64	40	0,69
100	100	104	Rd 130 x 1/4"	64	40	0,80

Liner DIN



DN	D1	D2	D3	L	L1	Weight [kg]
10	10	13	21,9	39	27	0,03
15	16	19	27,9	39	27	0,04
20	20	23	35,9	38	26	0,06
25	26	29	42,9	40	26	0,09
32	32	35	48,9	47	32	0,12
40	38	41	54,9	47	31	0,14
50	50	53	66,9	48	30	0,19
65	66	70	84,9	61	40	0,35
80	81	85	98,9	61	40	0,40
100	100	104	118,9	66	40	0,58



**Aseptic – Unions DIN 11864-1 Form A  
for Tubes acc. to DIN 11866 (Series A)**

**Union DIN**

1.4404		
DN	Price/EUR	Article No.
10	32,44	112L 00 40 2/1
15	34,93	112L 00 41 2/1
20	37,34	112L 00 42 2/1
25	39,14	112L 00 43 2/1
32	43,48	112L 00 44 2/1
40	45,31	112L 00 45 2/1
50	55,85	112L 00 46 2/1
65	78,39	112L 00 09 2/1
80	111,25	112L 00 10 2/1
100	154,55	112L 00 12 2/1

associated blind screw parts page 34-35

**Male DIN**

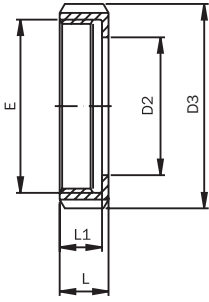
1.4404		
DN	Price/EUR	Article No.
10	12,90	1121 00 40 2
15	12,90	1121 00 41 2
20	14,00	1121 00 42 2
25	15,00	1121 00 43 2
32	17,00	1121 00 44 2
40	17,80	1121 00 45 2
50	22,70	1121 00 46 2
65	26,00	1121 00 09 2
80	45,85	1121 00 10 2
100	63,95	1121 00 12 2

**Liner DIN**

1.4404		
DN	Price/EUR	Article No.
10	8,50	1123 00 40 2
15	9,20	1123 00 41 2
20	11,00	1123 00 42 2
25	11,90	1123 00 43 2
32	13,70	1123 00 44 2
40	14,40	1123 00 45 2
50	18,15	1123 00 46 2
65	32,15	1123 00 09 2
80	36,60	1123 00 10 2
100	53,80	1123 00 12 2

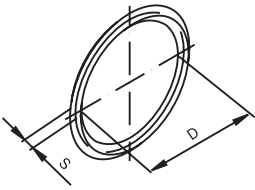
## Aseptic – Unions DIN 11864-1 Form A for Tubes acc. to DIN 11866 (Series A)

Nut



DN	D2	D3	E	L	L1	Weight [kg]
10	19	38	Rd 28 x 1/8"	18	15	0,07
15	25	44	Rd 34 x 1/8"	18	15	0,08
20	31	54	Rd 44 x 1/6"	20	17	0,13
25	36	63	Rd 52 x 1/6"	21	18	0,18
32	42	70	Rd 58 x 1/6"	21	18	0,22
40	49	78	Rd 65 x 1/6"	21	18	0,25
50	62	92	Rd 78 x 1/6"	22	19	0,33
65	80	112	Rd 95 x 1/6"	25	21	0,55
80	94	127	Rd 110 x 1/4"	29	25	0,80
100	115	148	Rd 130 x 1/4"	31	26	1,08

O-Ring



DN	D	S
10	12	3,5
15	18	3,5
20	22	3,5
25	28	3,5
32	34	5
40	40	5
50	52	5
65	68	5
80	83	5
100	102	5
125	127	5
150	152	5

**Aseptic – Unions DIN 11864-1 Form A  
for Tubes acc. to DIN 11866 (Series A)**

**Nut DIN 11851**

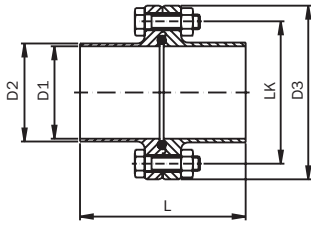
1.4301		
DN	Price/€	Article No.
10	6,18	11003 000 010 10
15	7,97	11003 000 015 10
20	7,48	11003 000 020 10
25	7,38	11003 000 025 10
32	7,92	11003 000 032 10
40	8,25	11003 000 040 10
50	9,68	11003 000 050 10
65	14,82	11003 000 065 10
80	23,28	11003 000 080 10
100	30,92	11003 000 100 10

**O-Ring**

DN	EPDM		FPM			PTFE		
	Price for spare part /€	Article No.	Price for spare part /€	Article No.	Surcharge/€	Price for spare part /€	Article No.	Surcharge/€
10	4,86	1129 00 40 1	9,71	1129 00 40 2	4,86	11,18	1129 00 40 4	6,32
15	4,86	1129 00 41 1	9,71	1129 00 41 2	4,86	11,18	1129 00 41 4	6,32
20	4,86	1129 00 42 1	9,71	1129 00 42 2	4,86	11,18	1129 00 42 4	6,32
25	4,86	1129 00 43 1	9,71	1129 00 43 2	4,86	11,18	1129 00 43 4	6,32
32	4,86	1129 00 44 1	9,71	1129 00 44 2	4,86	11,18	1129 00 44 4	6,32
40	4,86	1129 00 45 1	9,71	1129 00 45 2	4,86	11,18	1129 00 45 4	6,32
50	5,32	1129 00 46 1	10,63	1129 00 46 2	5,32	12,24	1129 00 46 4	6,92
65	5,42	1129 00 09 1	10,84	1129 00 09 2	5,42	12,47	1129 00 09 4	7,05
80	5,52	1129 00 10 1	11,04	1129 00 10 2	5,52	12,70	1129 00 10 4	7,18
100	5,88	1129 00 12 1	11,76	1129 00 12 2	5,88	13,52	1129 00 12 4	7,64
125	8,18	1129 00 13 1	16,36	1129 00 13 2	8,18	18,81	1129 00 13 4	10,63
150	9,20	1129 00 15 1	18,41	1129 00 15 2	9,20	21,16	1129 00 15 4	11,96

## Aseptic – Flange Connections DIN 11864-2 Form A for Tubes acc. to DIN 11866 (Series A)

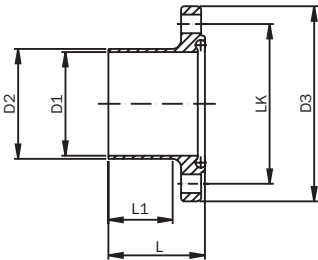
Flange Connection DIN



Is delivered in parts!

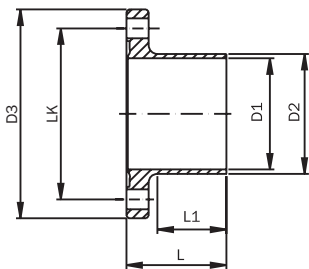
DN	D1	D2	D3	LK	L	Weight [kg]
10	10	13	54	37 4/M8 x 30	80	0,33
15	16	19	59	42 4/M8 x 30	80	0,39
20	20	23	64	47 4/M8 x 30	80	0,45
25	26	29	70	53 4/M8 x 30	80	0,53
32	32	35	76	59 4/M8 x 30	90	0,62
40	38	41	82	65 4/M8 x 30	90	0,70
50	50	53	94	77 4/M8 x 30	90	0,86
65	66	70	113	95 8/M8 x 30	108	1,24
80	81	85	133	112 8/M10 x 35	116	1,86
100	100	104	159	137 8/M10 x 40	116	2,88
125	125	129	183	161 8/M10 x 40	120	3,46
150	150	154	213	188 8/M12 x 50	120	4,82

Nut Flange DIN



DN	D1	D2	D3	LK	L	L1	Weight [kg]
10	10	13	54	37 4 x Ø 9	41,5	26	0,16
15	16	19	59	42 4 x Ø 9	41,5	26	0,20
20	20	23	64	47 4 x Ø 9	41,5	26	0,23
25	26	29	70	53 4 x Ø 9	41,5	26	0,27
32	32	35	76	59 4 x Ø 9	46,5	31	0,32
40	38	41	82	65 4 x Ø 9	46,5	31	0,36
50	50	53	94	77 4 x Ø 9	46,5	31	0,44
65	66	70	113	95 8 x Ø 9	55,5	42	0,63
80	81	85	133	112 8 x Ø 11	59,5	42	0,94
100	100	104	159	137 8 x Ø 11	59,5	42	1,46
125	125	129	183	161 8 x Ø 11	61,5	42	1,75
150	150	154	213	188 8 x Ø 14	61,5	40	2,44

Liner Flange DIN



DN	D1	D2	D3	LK	L	L1	Weight [kg]
10	10	13	54	37 4 x Ø 9	40	26	0,16
15	16	19	59	42 4 x Ø 9	40	26	0,19
20	20	23	64	47 4 x Ø 9	40	26	0,23
25	26	29	70	53 4 x Ø 9	40	26	0,26
32	32	35	76	59 4 x Ø 9	45	31	0,30
40	38	41	82	65 4 x Ø 9	45	31	0,34
50	50	53	94	77 4 x Ø 9	45	31	0,42
65	66	70	113	95 8 x Ø 9	54	42	0,60
80	81	85	133	112 8 x Ø 11	58	42	0,91
100	100	104	159	137 8 x Ø 11	58	42	1,42
125	125	129	183	161 8 x Ø 11	60	42	1,71
150	150	154	213	188 8 x Ø 14	60	40	2,38

**Aseptic – Flange Connections DIN 11864-2 Form A  
for Tubes acc. to DIN 11866 (Series A)**

**Flange Connection DIN**

1.4404		
DN	Price/EUR	Article No.
10	44,75	113L 00 40 2/1
15	46,00	113L 00 41 2/1
20	46,50	113L 00 42 2/1
25	47,00	113L 00 43 2/1
32	49,70	113L 00 44 2/1
40	55,21	113L 00 45 2/1
50	58,40	113L 00 46 2/1
65	75,07	113L 00 09 2/1
80	105,82	113L 00 10 2/1
100	145,38	113L 00 12 2/1
125	228,58	113L 00 13 2/1
150	320,75	113L 00 15 2/1

associated blind flanges page 38-39

**Nut Flange DIN**

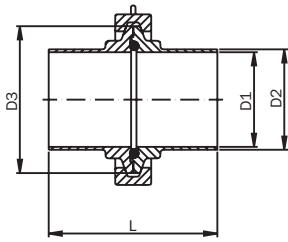
1.4404		
DN	Price/EUR	Article No.
10	19,30	1131 00 40 2
15	20,00	1131 00 41 2
20	20,40	1131 00 42 2
25	20,60	1131 00 43 2
32	21,60	1131 00 44 2
40	24,80	1131 00 45 2
50	26,00	1131 00 46 2
65	33,70	1131 00 09 2
80	46,10	1131 00 10 2
100	63,90	1131 00 12 2
125	106,00	1131 00 13 2
150	150,40	1131 00 15 2

**Liner Flange DIN**

1.4404		
DN	Price/EUR	Article No.
10	19,00	1133 00 40 2
15	19,60	1133 00 41 2
20	19,70	1133 00 42 2
25	20,00	1133 00 43 2
32	21,70	1133 00 44 2
40	24,00	1133 00 45 2
50	25,50	1133 00 46 2
65	32,90	1133 00 09 2
80	47,80	1133 00 10 2
100	67,90	1133 00 12 2
125	106,70	1133 00 13 2
150	150,50	1133 00 15 2

## Aseptic – Clamp Connections DIN 11864-3 Form A for Tubes acc. to DIN 11866 (Series A)

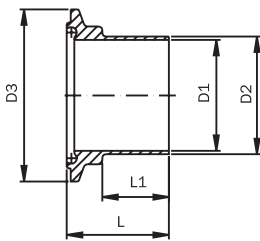
Clamp Connection DIN



Is delivered in parts!

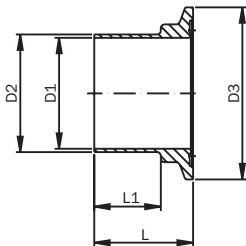
DN	D1	D2	D3	L	Weight [kg]
10	10	13	34	76	0,18
15	16	19	34	76	0,18
20	20	23	50,5	76	0,48
25	26	29	50,5	77	0,47
32	32	35	50,5	88	0,46
40	38	41	64	88	0,57
50	50	53	77,5	89	0,74
65	66	70	91	113	0,99
80	81	85	106	117	1,14
100	100	104	130	120	1,36

Clamp Nut DIN



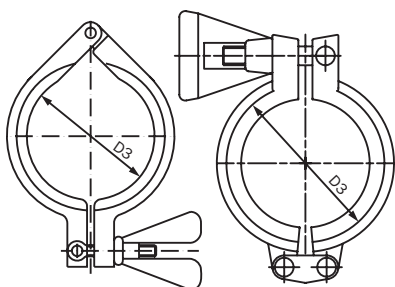
DN	D1	D2	D3	L	L1	Weight [kg]
10	10	13	34	39,5	26	0,04
15	16	19	34	39,5	26	0,04
20	20	23	50,5	39,5	26	0,09
25	26	29	50,5	40	28	0,09
32	32	35	50,5	45,5	30	0,09
40	38	41	64	45,5	30	0,13
50	50	53	77,5	46	30	0,17
65	66	70	91	58	40	0,26
80	81	85	106	60	40	0,30
100	100	104	130	61,5	40	0,40

Clamp Liner DIN



DN	D1	D2	D3	L	L1	Weight [kg]
10	10	13	34	38	26	0,04
15	16	19	34	38	26	0,04
20	20	23	50,5	38	26	0,08
25	26	29	50,5	38,5	28	0,07
32	32	35	50,5	44	30	0,06
40	38	41	64	44	30	0,10
50	50	53	77,5	44,5	30	0,14
65	66	70	91	56,5	40	0,21
80	81	85	106	58,5	40	0,25
100	100	104	130	60	40	0,35

Heavy Duty Clamp



DN	D3	Weight [kg]
10	34	0,10
15	34	0,10
20	50,5	0,31
25	50,5	0,31
32	50,5	0,31
40	64	0,34
50	77,5	0,44
65	91	0,53
80	106	0,59
100	130	0,60

## Aseptic – Clamp Connections DIN 11864-3 Form A for Tubes acc. to DIN 11866 (Series A)

### Clamp Connection DIN

1.4404		
DN	Price/EUR	Article No.
10	49,83	119L 00 40 2/1
15	49,83	119L 00 41 2/1
20	55,91	119L 00 42 2/1
25	59,11	119L 00 43 2/1
32	60,41	119L 00 44 2/1
40	66,74	119L 00 45 2/1
50	76,99	119L 00 46 2/1
65	99,16	119L 00 09 2/1
80	125,71	119L 00 10 2/1
100	163,18	119L 00 12 2/1

associated blind clamp page 42-43

### Clamp Nut DIN

1.4404		
DN	Price/EUR	Article No.
10	11,50	1193 00 40 2
15	11,50	1193 00 41 2
20	14,50	1193 00 42 2
25	16,20	1193 00 43 2
32	16,90	1193 00 44 2
40	19,80	1193 00 45 2
50	22,80	1193 00 46 2
65	34,00	1193 00 09 2
80	45,90	1193 00 10 2
100	60,00	1193 00 12 2

### Clamp Liner DIN

1.4404		
DN	Price/EUR	Article No.
10	10,00	1191 00 40 2
15	10,00	1191 00 41 2
20	13,50	1191 00 42 2
25	15,00	1191 00 43 2
32	15,60	1191 00 44 2
40	17,90	1191 00 45 2
50	19,70	1191 00 46 2
65	32,90	1191 00 09 2
80	45,50	1191 00 10 2
100	59,90	1191 00 12 2

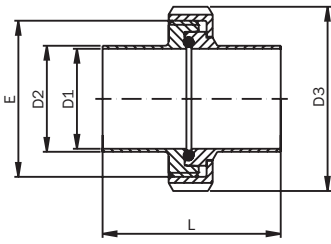
### Heavy Duty Clamp

1.4301 Single Pin			1.4301 Double Pin	
DN	Price/EUR	Article No.	Price/EUR	Article No.
10	23,47	1111 00 04 2	25,82	1111 00 04 3
15	23,47	1111 00 04 2	25,82	1111 00 04 3
20	23,05	1111 00 07 2	25,36	1111 00 07 3
25	23,05	1111 00 07 2	25,36	1111 00 07 3
32	23,05	1111 00 07 2	25,36	1111 00 07 3
40	24,18	1111 00 08 2	26,60	1111 00 08 3
50	29,17	1111 00 59 2	32,09	1111 00 59 3
65	26,84	1111 00 09 2	29,52	1111 00 09 3
80	28,79	1111 00 10 2	31,67	1111 00 10 3
100	37,40	1111 00 85 2	41,14	1111 00 85 3

The size of the clamp is defined on the basis of the diameter of the flange D1 of the appropriate nominal width

## Aseptic – Unions DIN 11864-1 Form A for Tubes acc. to DIN 11866 (Series B)

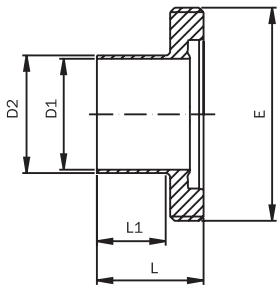
Union ISO



Is delivered in parts!

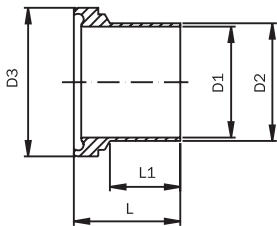
DN	D1	D2	D3	E	L	Weight [kg]
8	10,3	13,5	38	Rd 28 x 1/8"	76	0,15
10	14,0	17,2	44	Rd 34 x 1/8"	76	0,19
15	18,1	21,3	54	Rd 44 x 1/6"	78	0,27
20	23,7	26,9	63	Rd 52 x 1/6"	78	0,39
25	29,7	33,7	70	Rd 58 x 1/6"	88	0,52
32	38,4	42,4	78	Rd 65 x 1/6"	88	0,61
40	44,3	48,3	92	Rd 78 x 1/6"	90	0,81
50	56,3	60,3	112	Rd 95 x 1/6"	114	1,23
65	72,1	76,1	127	Rd 110 x 1/4"	117	1,86
80	84,3	88,9	148	Rd 130 x 1/4"	122	2,62

Male ISO



DN	D1	D2	E	L	L1	Weight [kg]
8	10,3	13,5	Rd 28 x 1/8"	41	27	0,05
10	14,0	17,2	Rd 34 x 1/8"	41	27	0,07
15	18,1	21,3	Rd 44 x 1/6"	43	27	0,13
20	23,7	26,9	Rd 52 x 1/6"	43	27	0,16
25	29,7	33,7	Rd 58 x 1/6"	48	32	0,20
32	38,4	42,4	Rd 65 x 1/6"	48	32	0,23
40	44,3	48,3	Rd 78 x 1/6"	49	31	0,32
50	56,3	60,3	Rd 95 x 1/6"	60	40	0,49
65	72,1	76,1	Rd 110 x 1/4"	64	40	0,80
80	84,3	88,9	Rd 130 x 1/4"	64	40	0,97

Liner ISO



DN	D1	D2	D3	L	L1	Weight [kg]
8	10,3	13,5	21,9	39	27	0,03
10	14,0	17,2	27,9	39	27	0,04
15	18,1	21,3	35,9	40	27	0,06
20	23,7	26,9	42,9	41	27	0,10
25	29,7	33,7	48,9	47	32	0,14
32	38,4	42,4	54,9	47	32	0,16
40	44,3	48,3	66,9	48	31	0,24
50	56,3	60,3	84,9	62	40	0,41
65	72,1	76,1	98,9	61	40	0,51
80	84,3	88,9	118,9	68	40	0,85



## Aseptic – Unions DIN 11864-1 Form A for Tubes acc. to DIN 11866 (Series B)

### Union ISO

1.4404		
DN	Price/EUR	Article No.
8	35,04	112L 00 75 2/1
10	37,83	112L 00 76 2/1
15	40,74	112L 00 77 2/1
20	43,39	112L 00 78 2/1
25	49,13	112L 00 79 2/1
32	51,71	112L 00 80 2/1
40	61,20	112L 00 81 2/1
50	86,14	112L 00 82 2/1
65	112,25	112L 00 83 2/1
80	142,40	112L 00 84 2/1

associated blind screw parts page 46-47

### Male ISO

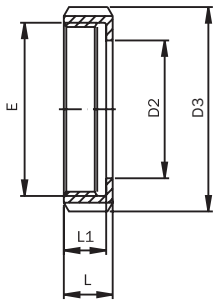
1.4404		
DN	Price/EUR	Article No.
8	13,40	1121 00 75 2
10	13,60	1121 00 76 2
15	15,30	1121 00 77 2
20	17,55	1121 00 78 2
25	20,10	1121 00 79 2
32	21,40	1121 00 80 2
40	25,60	1121 00 81 2
50	35,60	1121 00 82 2
65	46,80	1121 00 83 2
80	58,00	1121 00 84 2

### Liner ISO

1.4404		
DN	Price/EUR	Article No.
8	10,60	1123 00 75 2
10	11,40	1123 00 76 2
15	13,10	1123 00 77 2
20	13,60	1123 00 78 2
25	16,25	1123 00 79 2
32	17,20	1123 00 80 2
40	20,60	1123 00 81 2
50	30,25	1123 00 82 2
65	36,60	1123 00 83 2
80	47,70	1123 00 84 2

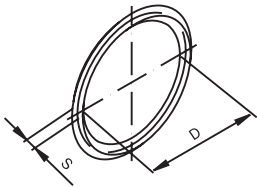
## Aseptic – Unions DIN 11864-1 Form A for Tubes acc. to DIN 11866 (Series B)

Nut



DN	D2	D3	E	L	L1	Weight [kg]
8	19	38	Rd 28 x 1/8"	18	15	0,07
10	25	44	Rd 34 x 1/8"	18	15	0,08
15	31	54	Rd 44 x 1/6"	20	17	0,13
20	36	63	Rd 52 x 1/6"	21	18	0,18
25	42	70	Rd 58 x 1/6"	21	18	0,22
32	49	78	Rd 65 x 1/6"	21	18	0,25
40	62	92	Rd 78 x 1/6"	22	19	0,33
50	80	112	Rd 95 x 1/6"	25	21	0,55
65	94	127	Rd 110 x 1/4"	29	25	0,80
80	115	148	Rd 130 x 1/4"	31	26	1,08

O-Ring



DN	D	S
8	12	3,5
10	16	3,5
15	20	3,5
20	26	3,5
25	32	5
32	40,5	5
40	46,5	5
50	58,5	5
65	73,5	5
80	85,5	5
100	111	5

**Aseptic – Unions DIN 11864-1 Form A  
for Tubes acc. to DIN 11866 (Series B)**

**Nut DIN 11851**

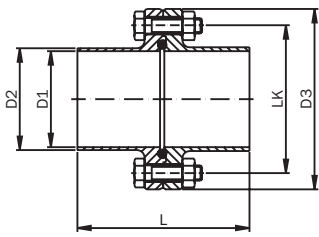
1.4301		
DN	Price/€UR	Article No.
8	6,18	11003 000 010 10
10	7,97	11003 000 015 10
15	7,48	11003 000 020 10
20	7,38	11003 000 025 10
25	7,92	11003 000 032 10
32	8,25	11003 000 040 10
40	9,68	11003 000 050 10
50	14,82	11003 000 065 10
65	23,28	11003 000 080 10
80	30,92	11003 000 100 10

**O-Ring**

DN	EPDM		FPM			PTFE		
	Price for spare part /€UR	Article No.	Price for spare part /€UR	Article No.	Surcharge/€UR	Price for spare part /€UR	Article No.	Surcharge/€UR
8	4,86	1129 00 40 1	9,71	1129 00 40 2	4,86	11,18	1129 00 40 4	6,32
10	4,86	1129 00 76 1	9,71	1129 00 76 2	4,86	11,18	1129 00 76 4	6,32
15	4,86	1129 00 77 1	9,71	1129 00 77 2	4,86	11,18	1129 00 77 4	6,32
20	4,86	1129 00 78 1	9,71	1129 00 78 2	4,86	11,18	1129 00 78 4	6,32
25	4,86	1129 00 79 1	9,71	1129 00 79 2	4,86	11,18	1129 00 79 4	6,32
32	4,86	1129 00 80 1	9,71	1129 00 80 2	4,86	11,18	1129 00 80 4	6,32
40	5,32	1129 00 81 1	10,63	1129 00 81 2	5,32	12,24	1129 00 81 4	6,92
50	5,47	1129 00 82 1	10,94	1129 00 82 2	5,47	12,58	1129 00 82 4	7,11
65	5,57	1129 00 83 1	11,15	1129 00 83 2	5,57	12,81	1129 00 83 4	7,24
80	5,78	1129 00 84 1	11,56	1129 00 84 2	5,78	13,29	1129 00 84 4	7,51
100	6,85	1129 00 85 1	13,70	1129 00 85 2	6,85	15,76	1129 00 85 4	8,91

## Aseptic – Flange Connections DIN 11864-2 Form A for Tubes acc. to DIN 11866 (Series B)

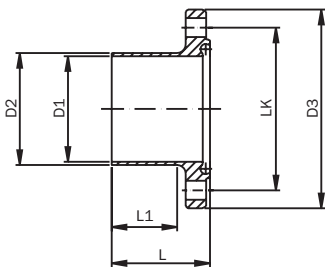
Flange Connection ISO



Is delivered in parts!

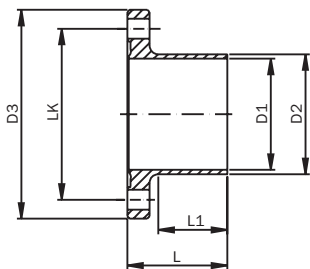
DN	D1	D2	D3	LK	L	Weight [kg]
8	10,3	13,5	54	37 4/M8 x 30	80	0,33
10	14,0	17,2	59	42 4/M8 x 30	80	0,39
15	18,1	21,3	62	45 4/M8 x 30	80	0,43
20	23,7	26,9	69	52 4/M8 x 30	80	0,53
25	29,7	33,7	74	57 4/M8 x 30	90	0,63
32	38,4	42,4	82	65 4/M8 x 30	90	0,74
40	44,3	48,3	88	71 4/M8 x 30	90	0,82
50	56,3	60,3	103	85 4/M8 x 30	108	1,12
65	72,1	76,1	125	104 8/M10 x 30	112	1,66
80	84,3	88,9	137	116 8/M10 x 35	116	2,01
100	109,7	114,3	168	146 8/M10 x 35	116	3,25

Nut Flange ISO



DN	D1	D2	D3	LK	L	L1	Weight [kg]
8	10,3	13,5	54	37 4 x Ø 9	41,5	26	0,17
10	14,0	17,2	59	42 4 x Ø 9	41,5	26	0,21
15	18,1	21,3	62	45 4 x Ø 9	41,5	26	0,22
20	23,7	26,9	69	52 4 x Ø 9	41,5	26	0,27
25	29,7	33,7	74	57 4 x Ø 9	46,5	31	0,32
32	38,4	42,4	82	65 4 x Ø 9	46,5	31	0,38
40	44,3	48,3	88	71 4 x Ø 9	46,5	31	0,42
50	56,3	60,3	103	85 4 x Ø 9	55,5	42	0,57
65	72,1	76,1	125	104 8 x Ø 11	57,5	42	0,89
80	84,3	88,9	137	116 8 x Ø 11	59,5	42	1,02
100	109,7	114,3	168	146 8 x Ø 11	59,5	42	1,64

Liner Flange ISO



DN	D1	D2	D3	LK	L	L1	Weight [kg]
8	10,3	13,5	54	37 4 x Ø 9	40	26	0,15
10	14,0	17,2	59	42 4 x Ø 9	40	26	0,18
15	18,1	21,3	62	45 4 x Ø 9	40	26	0,21
20	23,7	26,9	69	52 4 x Ø 9	40	26	0,26
25	29,7	33,7	74	57 4 x Ø 9	45	31	0,31
32	38,4	42,4	82	65 4 x Ø 9	45	31	0,36
40	44,3	48,3	88	71 4 x Ø 9	45	31	0,40
50	56,3	60,3	103	85 4 x Ø 9	54	42	0,55
65	72,1	76,1	125	104 8 x Ø 11	56	42	0,77
80	84,3	88,9	137	116 8 x Ø 11	58	42	0,99
100	109,7	114,3	168	146 8 x Ø 11	58	42	1,60

**Aseptic – Flange Connections DIN 11864-2 Form A  
for Tubes acc. to DIN 11866 (Series B)**

**Flange Connection ISO**

1.4404		
DN	Price/EUR	Article No.
8	45,81	113L 00 75 2/1
10	47,01	113L 00 76 2/1
15	50,51	113L 00 77 2/1
20	50,71	113L 00 78 2/1
25	52,91	113L 00 79 2/1
32	60,86	113L 00 80 2/1
40	64,22	113L 00 81 2/1
50	80,42	113L 00 82 2/1
65	110,42	113L 00 83 2/1
80	132,97	113L 00 84 2/1
100	174,55	113L 00 85 2/1

associated blind flanges page 50-51

**Nut Flange ISO**

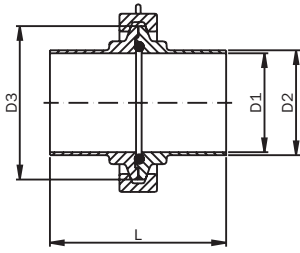
1.4404		
DN	Price/EUR	Article No.
8	20,10	1131 00 75 2
10	20,50	1131 00 76 2
15	22,10	1131 00 77 2
20	22,30	1131 00 78 2
25	23,50	1131 00 79 2
32	27,45	1131 00 80 2
40	28,40	1131 00 81 2
50	37,10	1131 00 82 2
65	49,85	1131 00 83 2
80	60,50	1131 00 84 2
100	81,20	1131 00 85 2

**Liner Flange ISO**

1.4404		
DN	Price/EUR	Article No.
8	19,30	1133 00 75 2
10	20,10	1133 00 76 2
15	22,00	1133 00 77 2
20	22,00	1133 00 78 2
25	23,00	1133 00 79 2
32	27,00	1133 00 80 2
40	28,95	1133 00 81 2
50	36,30	1133 00 82 2
65	49,10	1133 00 83 2
80	60,50	1133 00 84 2
100	80,10	1133 00 85 2

## Aseptic – Clamp Connections DIN 11864-3 Form A for Tubes acc. to DIN 11866 (Series B)

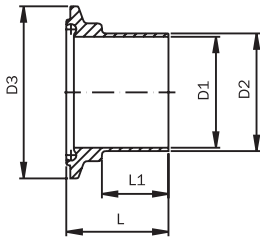
Clamp Connection ISO



Is delivered in parts!

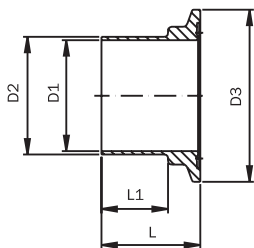
DN	D1	D2	D3	L	Weight [kg]
8	10,3	13,5	34	76	0,18
10	14,0	17,2	34	76	0,18
15	18,1	21,3	34	78	0,22
20	23,7	26,9	50,5	78	0,47
25	29,7	33,7	50,5	88	0,46
32	38,4	42,4	64	88	0,50
40	44,3	48,3	64	90	0,60
50	56,3	60,3	91	114	1,04
65	72,1	76,1	106	117	1,25
80	84,3	88,9	119	122	1,33

Clamp Nut ISO



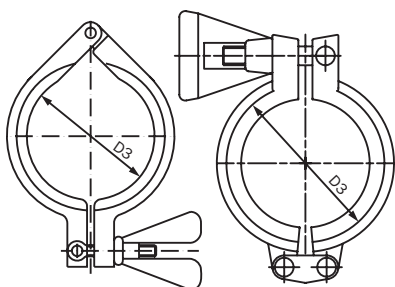
DN	D1	D2	D3	L	L1	Weight [kg]
8	10,3	13,5	34	39,5	26	0,05
10	14,0	17,2	34	39,5	26	0,05
15	18,1	21,3	34	40,5	26	0,09
20	23,7	26,9	50,5	40,0	30	0,09
25	29,7	33,7	50,5	45,5	30	0,09
32	38,4	42,4	64	45,5	30	0,14
40	44,3	48,3	64	46,5	30	0,18
50	56,3	60,3	91	58,5	40	0,28
65	72,1	76,1	106	60,0	40	0,34
80	84,3	88,9	119	62,5	40	0,37

Clamp Liner ISO



DN	D1	D2	D3	L	L1	Weight [kg]
8	10,3	13,5	34	38	26	0,04
10	14,0	17,2	34	38	26	0,04
15	18,1	21,3	34	39	26	0,04
20	23,7	26,9	50,5	39	30	0,08
25	29,7	33,7	50,5	44	30	0,08
32	38,4	42,4	64	44	30	0,12
40	44,3	48,3	64	45	30	0,11
50	56,3	60,3	91	57	40	0,22
65	72,1	76,1	106	58,5	40	0,32
80	84,3	88,9	119	61	40	0,36

Heavy Duty Clamp



DN	D3	Weight [kg]
8	34	0,10
10	34	0,10
15	34	0,10
20	50,5	0,31
25	50,5	0,31
32	64	0,34
40	64	0,34
50	91	0,44
65	106	0,53
80	119	0,59

## Aseptic – Clamp Connections DIN 11864-3 Form A for Tubes acc. to DIN 11866 (Series B)

### Clamp Connection ISO

1.4404		
DN	Price/EUR	Article No.
8	52,43	119L 00 75 2/1
10	52,78	119L 00 76 2/1
15	52,78	119L 00 77 2/1
20	60,21	119L 00 78 2/1
25	62,26	119L 00 79 2/1
32	66,44	119L 00 80 2/1
40	71,00	119L 00 81 2/1
50	80,46	119L 00 82 2/1
65	108,96	119L 00 83 2/1
80	136,24	119L 00 84 2/1

associated blind clamp page 54-55

### Clamp Nut ISO

1.4404		
DN	Price/EUR	Article No.
8	12,30	1193 00 75 2
10	12,65	1193 00 76 2
15	12,65	1193 00 77 2
20	16,70	1193 00 78 2
25	17,85	1193 00 79 2
32	19,45	1193 00 80 2
40	21,80	1193 00 81 2
50	25,10	1193 00 82 2
65	37,40	1193 00 83 2
80	50,50	1193 00 84 2

### Clamp Liner ISO

1.4404		
DN	Price/EUR	Article No.
8	11,80	1191 00 75 2
10	11,80	1191 00 76 2
15	11,80	1191 00 77 2
20	15,60	1191 00 78 2
25	16,50	1191 00 79 2
32	17,95	1191 00 80 2
40	19,70	1191 00 81 2
50	23,05	1191 00 82 2
65	37,20	1191 00 83 2
80	50,05	1191 00 84 2

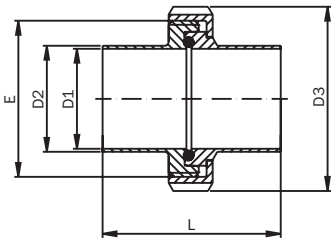
### Heavy Duty Clamp

1.4301 Single Pin			1.4301 Double Pin	
DN	Price/EUR	Article No.	Price/EUR	Article No.
8	23,47	1111 00 04 2	25,82	1111 00 04 3
10	23,47	1111 00 04 2	25,82	1111 00 04 3
15	23,47	1111 00 04 2	25,36	1111 00 04 3
20	23,05	1111 00 07 2	25,36	1111 00 07 3
25	23,05	1111 00 07 2	25,36	1111 00 07 3
32	24,18	1111 00 08 2	26,60	1111 00 08 3
40	24,18	1111 00 08 2	32,09	1111 00 08 3
50	26,84	1111 00 09 2	29,52	1111 00 09 3
65	28,79	1111 00 10 2	31,67	1111 00 10 3
80	29,91	1111 00 12 2	41,14	1111 00 12 3

The size of the clamp is defined on the basis of the diameter of the flange D1 of the appropriate nominal width

## Aseptic – Unions DIN 11864-1 Form A for Tubes acc. to DIN 11866 (Series C)

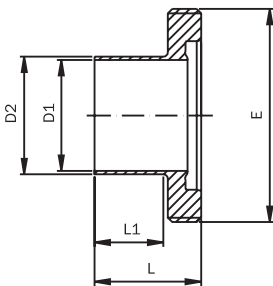
Union Inch



Is delivered in parts!

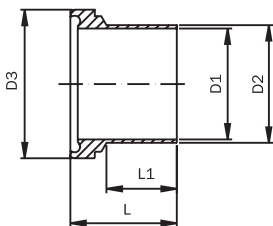
DN	D1	D2	D3	E	L	Weight [kg]
1/2"	9,4	12,7	38	Rd 28 x 1/8"	76	0,28
3/4"	15,75	19,05	44	Rd 34 x 1/8"	76	0,36
1"	22,1	25,4	63	Rd 52 x 1/6"	77	0,49
1 1/2"	34,8	38,1	78	Rd 65 x 1/6"	88	0,63
2"	47,5	50,8	92	Rd 78 x 1/6"	89	0,82
2 1/2"	60,2	63,5	112	Rd 95 x 1/6"	115	1,37
3"	72,9	76,2	127	Rd 110 x 1/4"	117	1,98
4"	97,38	101,6	148	Rd 130 x 1/4"	119	2,52

Male Inch



DN	D1	D2	E	L	L1	Weight [kg]
1/2"	9,4	12,7	Rd 28 x 1/8"	41	27	0,05
3/4"	15,75	19,05	Rd 34 x 1/8"	41	27	0,07
1"	22,1	25,4	Rd 52 x 1/6"	43	26	0,17
1 1/2"	34,8	38,1	Rd 65 x 1/6"	48,5	30	0,23
2"	47,5	50,8	Rd 78 x 1/6"	48,5	30	0,29
2 1/2"	60,2	63,5	Rd 95 x 1/6"	60	40	0,46
3"	72,9	76,2	Rd 110 x 1/4"	64	40	0,73
4"	97,38	101,6	Rd 130 x 1/4"	64	40	0,82

Liner Inch



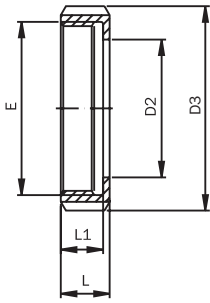
DN	D1	D2	D3	L	L1	Weight [kg]
1/2"	9,4	12,7	21,9	39	27	0,10
3/4"	15,75	19,05	27,9	39	27	0,11
1"	22,1	25,4	42,9	40	26	0,10
1 1/2"	34,8	38,1	54,9	46,5	30	0,15
2"	47,5	50,8	66,9	47,5	30	0,21
2 1/2"	60,2	63,5	84,9	63	40	0,36
3"	72,9	76,2	98,9	61	40	0,45
4"	97,38	101,6	118,9	65	40	0,62





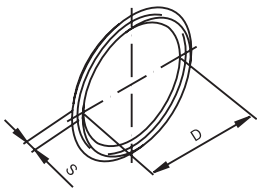
## Aseptic – Unions DIN 11864-1 Form A for Tubes acc. to DIN 11866 (Series C)

Nut



DN	D2	D3	E	L	L1	Weight [kg]
1/2"	19	38	Rd 28 x 1/8"	18	15	0,07
3/4"	25	44	Rd 34 x 1/8"	18	15	0,08
1"	36	63	Rd 52 x 1/6"	21	18	0,18
1 1/2"	49	78	Rd 65 x 1/6"	21	18	0,25
2"	62	92	Rd 78 x 1/6"	22	19	0,33
2 1/2"	80	112	Rd 95 x 1/6"	25	21	0,55
3"	94	127	Rd 110 x 1/4"	29	25	0,80
4"	115	148	Rd 130 x 1/4"	31	26	1,08

O-Ring



DN	D	S
1/2"	12	3,5
3/4"	18	3,5
1"	24	3,5
1 1/2"	37	5
2"	50	5
2 1/2"	62	5
3"	75	5
4"	100	5

**Aseptic – Unions DIN 11864-1 Form A  
for Tubes acc. to DIN 11866 (Series C)**

**Nut DIN 11851**

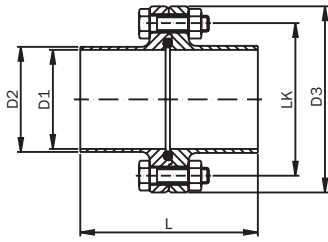
1.4301		
DN	Price/€	Article No.
1/2"	6,18	11003 000 010 10
3/4"	7,97	11003 000 015 10
1"	7,38	11003 000 025 10
1 1/2"	8,25	11003 000 040 10
2"	9,68	11003 000 050 10
2 1/2"	14,82	11003 000 065 10
3"	23,28	11003 000 080 10
4"	30,92	11003 000 100 10

**O-Ring**

DN	EPDM		FPM			PTFE		
	Price for spare part /€	Article No.	Price for spare part /€	Article No.	Surcharge/€	Price for spare part /€	Article No.	Surcharge/€
1/2"	4,86	1129 00 40 1	9,71	1129 00 40 2	4,86	11,18	1129 00 40 4	6,32
3/4"	4,86	1129 00 41 1	9,71	1129 00 41 2	4,86	11,18	1129 00 41 4	6,32
1"	4,86	1129 00 91 1	9,71	1129 00 91 2	4,86	11,18	1129 00 91 4	6,32
1 1/2"	4,86	1129 00 92 1	9,71	1129 00 92 2	4,86	11,18	1129 00 92 4	6,32
2"	5,32	1129 00 93 1	10,63	1129 00 93 2	5,32	12,24	1129 00 93 4	6,92
2 1/2"	5,52	1129 00 94 1	11,04	1129 00 94 2	5,52	12,70	1129 00 94 4	7,18
3"	5,52	1129 00 95 1	11,04	1129 00 95 2	5,52	12,70	1129 00 95 4	7,18
4"	5,88	1129 00 96 1	11,76	1129 00 96 2	5,88	13,52	1129 00 96 4	7,64

## Aseptic – Flange Connections DIN 11864-2 Form A for Tubes acc. to DIN 11866 (Series C)

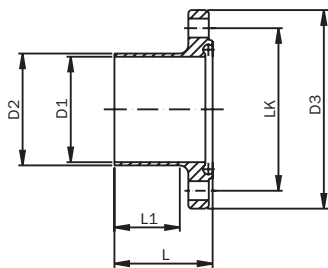
Flange Connection Inch



Is delivered in parts!

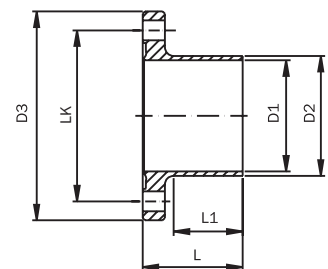
DN	D1	D2	D3	LK	L	Weight [kg]
1/2"	9,4	12,7	54	37 4/M8 x 30	80	0,33
3/4"	15,75	19,05	59	42 4/M8 x 30	80	0,39
1"	22,1	25,4	66	49 4/M8 x 30	80	0,48
1 1/2"	34,8	38,1	79	62 4/M8 x 30	90	0,67
2"	47,5	50,8	92	75 4/M8 x 30	90	0,85
2 1/2"	60,2	63,5	107	89 8/M8 x 30	108	1,08
3"	72,9	76,2	125	104 8/M10 x 30	112	1,62
4"	97,38	101,6	157	135 8/M10 x 35	116	2,85

Nut Flange Inch



DN	D1	D2	D3	LK	L	L1	Weight [kg]
1/2"	9,4	12,7	54	37 4 x Ø 9	41,5	26	0,15
3/4"	15,75	19,05	59	42 4 x Ø 9	41,5	26	0,21
1"	22,1	25,4	66	49 4 x Ø 9	41,5	26	0,24
1 1/2"	34,8	38,1	79	62 4 x Ø 9	46,5	31	0,34
2"	47,5	50,8	92	75 4 x Ø 9	46,5	31	0,44
2 1/2"	60,2	63,5	107	89 8 x Ø 9	55,5	42	0,56
3"	72,9	76,2	125	104 8 x Ø 11	57,5	42	0,83
4"	97,38	101,6	157	135 8 x Ø 11	59,5	42	1,45

Liner Flange Inch

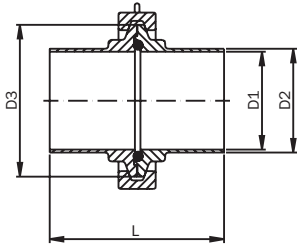


DN	D1	D2	D3	LK	L	L1	Weight [kg]
1/2"	9,4	12,7	54	37 4 x Ø 9	40	26	0,16
3/4"	15,75	19,05	59	42 4 x Ø 9	40	26	0,20
1"	22,1	25,4	66	49 4 x Ø 9	40	26	0,24
1 1/2"	34,8	38,1	79	62 4 x Ø 9	45	31	0,33
2"	47,5	50,8	92	75 4 x Ø 9	45	31	0,41
2 1/2"	60,2	63,5	107	89 8 x Ø 9	54	42	0,53
3"	72,9	76,2	125	104 8 x Ø 11	56	42	0,80
4"	97,38	101,6	157	135 8 x Ø 11	58	42	1,41



## Aseptic – Clamp Connections DIN 11864-3 Form A for Tubes acc. to DIN 11866 (Series C)

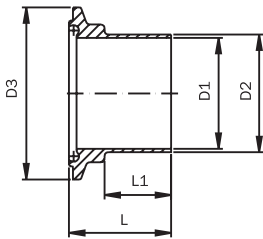
Clamp Connection Inch



Is delivered in parts!

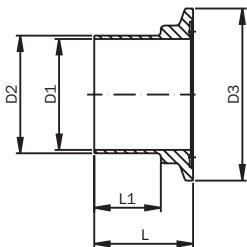
DN	D1	D2	D3	L	Weight [kg]
1/2"	9,4	12,7	34	76	0,18
3/4"	15,75	19,05	34	76	0,18
1"	22,1	25,4	50,5	77	0,48
1 1/2"	34,8	38,1	64	88	0,47
2"	47,5	50,8	77,5	89	0,46
2 1/2"	60,2	63,5	91	115	0,57
3"	72,9	76,2	106	117	0,74
4"	97,38	101,6	130	119	0,9

Clamp Nut Inch



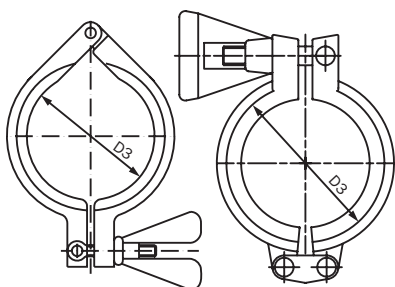
DN	D1	D2	D3	L	L1	Weight [kg]
1/2"	9,4	12,7	34	39,5	26	0,05
3/4"	15,75	19,05	34	39,5	26	0,05
1"	22,1	25,4	50,5	40	28	0,09
1 1/2"	34,8	38,1	64	45,5	30	0,14
2"	47,5	50,8	77,5	46	30	0,17
2 1/2"	60,2	63,5	91	59	40	0,24
3"	72,9	76,2	106	60	40	0,30
4"	97,38	101,6	130	61	40	0,42

Clamp Liner Inch



DN	D1	D2	D3	L	L1	Weight [kg]
1/2"	9,4	12,7	34	38	26	0,04
3/4"	15,75	19,05	34	38	26	0,04
1"	22,1	25,4	50,5	38,5	28	0,08
1 1/2"	34,8	38,1	64	44	30	0,12
2"	47,5	50,8	77,5	44,5	30	0,17
2 1/2"	60,2	63,5	91	57,5	40	0,24
3"	72,9	76,2	106	58,5	40	0,30
4"	97,38	101,6	130	59,5	40	0,44

Heavy Duty Clamp

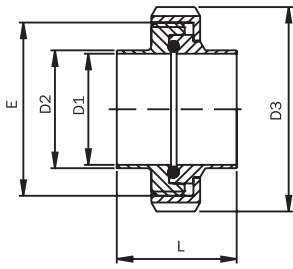


DN	D3	Weight [kg]
1/2"	34	0,10
3/4"	34	0,10
1"	50,5	0,31
1 1/2"	64	0,31
2"	77,5	0,31
2 1/2"	91	0,34
3"	106	0,44
4"	130	0,53



## Hygienic – Unions DIN 11853-1 for Tubes acc. to DIN 11866 (Series A) and DIN 11850 (Series 2)

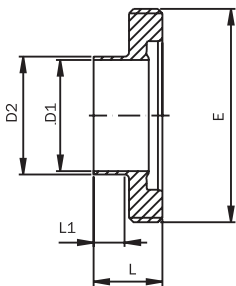
Union DIN (short)



Is delivered in parts!

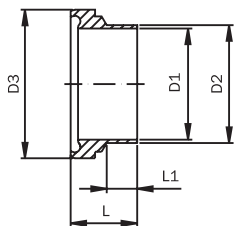
DN	D1	D2	D3	E	L	Weight [kg]
10	10	13	38	Rd 28 x 1/8"	32	0,13
15	16	19	44	Rd 34 x 1/8"	32	0,16
20	20	23	54	Rd 44 x 1/6"	34	0,28
25	26	29	63	Rd 52 x 1/6"	42	0,39
32	32	35	70	Rd 58 x 1/6"	48	0,47
40	38	41	78	Rd 65 x 1/6"	50	0,55
50	50	53	92	Rd 78 x 1/6"	54	0,73
65	66	70	112	Rd 95 x 1/6"	62	1,18
80	81	85	127	Rd 110 x 1/4"	72	1,68
100	100	104	148	Rd 130 x 1/4"	86	2,29

Male DIN (short)



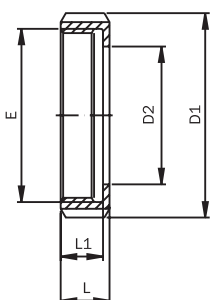
DN	D1	D2	E	L	L1	Weight [kg]
10	10	13	Rd 28 x 1/8"	19	5	0,04
15	16	19	Rd 34 x 1/8"	19	5	0,06
20	20	23	Rd 44 x 1/6"	21	5	0,11
25	26	29	Rd 52 x 1/6"	26	10	0,14
32	32	35	Rd 58 x 1/6"	30	14	0,15
40	38	41	Rd 65 x 1/6"	31	15	0,19
50	50	53	Rd 78 x 1/6"	31	15	0,25
65	66	70	Rd 95 x 1/6"	36	16	0,37
80	81	85	Rd 110 x 1/4"	42	18	0,58
100	100	104	Rd 130 x 1/4"	50	26	0,71

Liner DIN (short)



DN	D1	D2	D3	L	L1	Weight [kg]
10	10	13	21,9	17	5	0,02
15	16	19	27,9	17	5	0,02
20	20	23	35,9	18	5	0,04
25	26	29	42,9	22	8	0,07
32	32	35	48,9	25	10	0,10
40	38	41	54,9	26	10	0,11
50	50	53	66,9	30	13	0,16
65	66	70	84,9	34	15	0,26
80	81	85	98,9	38	15	0,30
100	100	104	118,9	46	23	0,50

Nut



DN	D1	D2	E	L	L1	Weight [kg]
10	38	19	Rd 28 x 1/8"	18	15	0,07
15	44	25	Rd 34 x 1/8"	18	15	0,08
20	54	31	Rd 44 x 1/6"	20	17	0,13
25	63	36	Rd 52 x 1/6"	21	18	0,18
32	70	42	Rd 58 x 1/6"	21	18	0,22
40	78	49	Rd 65 x 1/6"	21	18	0,25
50	92	62	Rd 78 x 1/6"	22	19	0,33
65	112	80	Rd 95 x 1/6"	25	21	0,55
80	127	94	Rd 110 x 1/4"	29	25	0,80
100	148	115	Rd 130 x 1/4"	31	26	1,08



**Hygienic – Unions DIN 11853-1**  
for Tubes acc. to DIN 11866 (Series A) and DIN 11850 (Series 2)

**Union DIN (short)**

1.4301		1.4404		
DN	Price/EUR	Article No.	Price/EUR	Article No.
10	26,79	112K 00 40 1/1	28,94	112K 00 40 2/1
15	28,58	112K 00 41 1/1	31,23	112K 00 41 2/1
20	28,19	112K 00 42 1/1	31,09	112K 00 42 2/1
25	29,54	112K 00 43 1/1	33,54	112K 00 43 2/1
32	32,33	112K 00 44 1/1	35,58	112K 00 44 2/1
40	33,61	112K 00 45 1/1	37,96	112K 00 45 2/1
50	38,30	112K 00 46 1/1	42,50	112K 00 46 2/1
65	54,59	112K 00 09 1/1	59,74	112K 00 09 2/1
80	77,40	112K 00 10 1/1	88,70	112K 00 10 2/1
100	109,30	112K 00 12 1/1	125,20	112K 00 12 2/1

**Male DIN (short)**

1.4301		1.4404		
DN	Price/EUR	Article No.	Price/EUR	Article No.
10	10,00	1122 00 40 1	11,15	1122 00 40 2
15	10,00	1122 00 41 1	11,65	1122 00 41 2
20	10,10	1122 00 42 1	12,00	1122 00 42 2
25	10,20	1122 00 43 1	13,70	1122 00 43 2
32	11,15	1122 00 44 1	14,00	1122 00 44 2
40	11,80	1122 00 45 1	14,95	1122 00 45 2
50	13,20	1122 00 46 1	15,60	1122 00 46 2
65	19,55	1122 00 09 1	22,40	1122 00 09 2
80	28,80	1122 00 10 1	36,40	1122 00 10 2
100	43,10	1122 00 12 1	55,30	1122 00 12 2

**Liner DIN (short)**

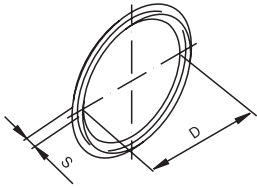
1.4301		1.4404		
DN	Price/EUR	Article No.	Price/EUR	Article No.
10	5,75	1124 00 40 1	6,75	1124 00 40 2
15	5,75	1124 00 41 1	6,75	1124 00 41 2
20	5,75	1124 00 42 1	6,75	1124 00 42 2
25	7,10	1124 00 43 1	7,60	1124 00 43 2
32	8,40	1124 00 44 1	8,80	1124 00 44 2
40	8,70	1124 00 45 1	9,90	1124 00 45 2
50	10,10	1124 00 46 1	11,90	1124 00 46 2
65	14,80	1124 00 09 1	17,10	1124 00 09 2
80	19,80	1124 00 10 1	23,50	1124 00 10 2
100	29,40	1124 00 12 1	33,10	1124 00 12 2

**Nut DIN 11851**

1.4301		
DN	Price/EUR	Article No.
10	6,18	11003 000 010 10
15	7,97	11003 000 015 10
20	7,48	11003 000 020 10
25	7,38	11003 000 025 10
32	7,92	11003 000 032 10
40	8,25	11003 000 040 10
50	9,68	11003 000 050 10
65	14,82	11003 000 065 10
80	23,28	11003 000 080 10
100	30,92	11003 000 100 10

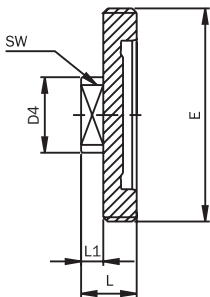
## Hygienic – Unions DIN 11853-1 for Tubes acc. to DIN 11866 (Series A)

O-Ring



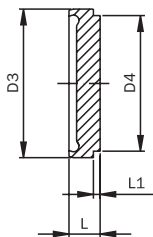
DN	D	S
10	12	3,5
15	18	3,5
20	22	3,5
25	28	3,5
32	34	5
40	40	5
50	52	5
65	68	5
80	83	5
100	102	5
125	127	5
150	152	5

Blind Male DIN



DN	D4	E	SW	L	L1	Weight [kg]
10	22	Rd 28 x 1/8"	17	24	12	0,07
15	22	Rd 34 x 1/8"	17	24	12	0,10
20	22	Rd 44 x 1/6"	17	24	10	0,16
25	40	Rd 52 x 1/6"	27	24	10	0,23
32	40	Rd 58 x 1/6"	27	24	10	0,25
40	40	Rd 65 x 1/6"	27	24	10	0,30
50	40	Rd 78 x 1/6"	27	24	10	0,39
65	48	Rd 95 x 1/6"	32	28	12	0,60
80	48	Rd 110 x 1/4"	32	28	8	1,07
100	48	Rd 130 x 1/4"	32	30	10	1,27

Blind Liner DIN



DN	D3	D4	L	L1	Weight [kg]
10	21,9	18	9	3	0,02
15	27,9	24	9	3	0,03
20	35,9	30	10	3	0,06
25	42,9	35	12	3	0,10
32	48,9	41	13	3	0,13
40	54,9	48	13	3	0,16
50	66,9	61	14	3	0,27
65	84,9	79	16	4	0,52
80	98,9	93	16	4	0,70
100	118,9	114	20	5	1,37

## Hygienic – Unions DIN 11853-1 for Tubes acc. to DIN 11866 (Series A)

### O-Ring

EPDM		FPM			PTFE			
DN	Price for spare part /EUR	Article No.	Price for spare part /EUR	Article No.	Surcharge/EUR	Price for spare part /EUR	Article No.	Surcharge/EUR
10	4,86	1129 00 40 1	9,71	1129 00 40 2	4,86	11,18	1129 00 40 4	6,32
15	4,86	1129 00 41 1	9,71	1129 00 41 2	4,86	11,18	1129 00 41 4	6,32
20	4,86	1129 00 42 1	9,71	1129 00 42 2	4,86	11,18	1129 00 42 4	6,32
25	4,86	1129 00 43 1	9,71	1129 00 43 2	4,86	11,18	1129 00 43 4	6,32
32	4,86	1129 00 44 1	9,71	1129 00 44 2	4,86	11,18	1129 00 44 4	6,32
40	4,86	1129 00 45 1	9,71	1129 00 45 2	4,86	11,18	1129 00 45 4	6,32
50	5,32	1129 00 46 1	10,63	1129 00 46 2	5,32	12,24	1129 00 46 4	6,92
65	5,42	1129 00 09 1	10,84	1129 00 09 2	5,42	12,47	1129 00 09 4	7,05
80	5,52	1129 00 10 1	11,04	1129 00 10 2	5,52	12,70	1129 00 10 4	7,18
100	5,88	1129 00 12 1	11,76	1129 00 12 2	5,88	13,52	1129 00 12 4	7,64
125	8,18	1129 00 13 1	16,36	1129 00 13 2	8,18	18,81	1129 00 13 4	10,63
150	9,20	1129 00 15 1	18,41	1129 00 15 2	9,20	21,16	1129 00 15 4	11,96

### Blind Male DIN

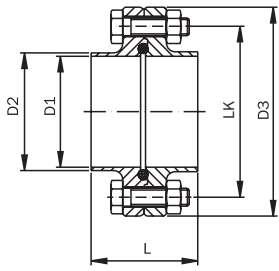
1.4404		
DN	Price/EUR	Article No.
10	18,80	1127 00 40 2
15	18,80	1127 00 41 2
20	18,80	1127 00 42 2
25	19,00	1127 00 43 2
32	21,60	1127 00 44 2
40	22,40	1127 00 45 2
50	31,50	1127 00 46 2
65	41,90	1127 00 09 2
80	54,70	1127 00 10 2
100	64,80	1127 00 12 2

### Blind Liner DIN

1.4404		
DN	Price/EUR	Article No.
10	9,30	1125 00 40 2
15	9,30	1125 00 41 2
20	9,30	1125 00 42 2
25	9,30	1125 00 43 2
32	9,80	1125 00 44 2
40	12,70	1125 00 45 2
50	17,10	1125 00 46 2
65	22,50	1125 00 09 2
80	25,70	1125 00 10 2
100	40,00	1125 00 12 2

## Hygienic – Flange Connections DIN 11853-2 for Tubes acc. to DIN 11866 (Series A) and DIN 11850 (Series 2)

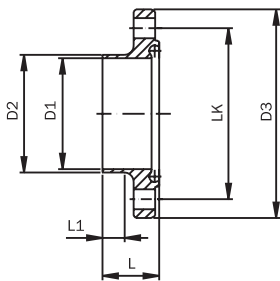
Flange Connection DIN (short)



Is delivered in parts!

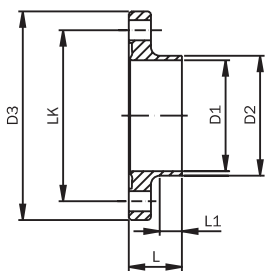
DN	D1	D2	D3	LK	L	Weight [kg]
10	10	13	54	37 4/M8 x 30	48	0,31
15	16	19	59	42 4/M8 x 30	48	0,37
20	20	23	64	47 4/M8 x 30	48	0,43
25	26	29	70	53 4/M8 x 30	48	0,50
32	32	35	76	59 4/M8 x 30	48	0,57
40	38	41	82	65 4/M8 x 30	48	0,64
50	50	53	94	77 4/M8 x 30	48	0,78
65	66	70	113	95 8/M8 x 30	48	1,03
80	81	85	133	112 8/M10 x 35	52	1,59
100	100	104	159	137 8/M10 x 40	52	2,56
125	125	129	183	161 8/M10 x 40	56	3,06
150	150	154	213	188 8/M12 x 50	56	4,34

Nut Flange DIN (short)



DN	D1	D2	D3	LK	L	L1	Weight [kg]
10	10	13	54	37 4 x Ø 9	25,5	10	0,16
15	16	19	59	42 4 x Ø 9	25,5	10	0,19
20	20	23	64	47 4 x Ø 9	25,5	10	0,22
25	26	29	70	53 4 x Ø 9	25,5	10	0,25
32	32	35	76	59 4 x Ø 9	25,5	10	0,29
40	38	41	82	65 4 x Ø 9	25,5	10	0,33
50	50	53	94	77 4 x Ø 9	25,5	10	0,40
65	66	70	113	95 8 x Ø 9	25,5	10	0,53
80	81	85	133	112 8 x Ø 11	27,5	10	0,81
100	100	104	159	137 8 x Ø 11	27,5	10	1,30
125	125	129	183	161 8 x Ø 11	29,5	10	1,55
150	150	154	213	188 8 x Ø 14	29,5	8	2,20

Liner Flange DIN (short)



DN	D1	D2	D3	LK	L	L1	Weight [kg]
10	10	13	54	37 4 x Ø 9	24	10	0,16
15	16	19	59	42 4 x Ø 9	24	10	0,18
20	20	23	64	47 4 x Ø 9	24	10	0,21
25	26	29	70	53 4 x Ø 9	24	10	0,25
32	32	35	76	59 4 x Ø 9	24	10	0,28
40	38	41	82	65 4 x Ø 9	24	10	0,31
50	50	53	94	77 4 x Ø 9	24	10	0,38
65	66	70	113	95 8 x Ø 9	24	10	0,50
80	81	85	133	112 8 x Ø 11	26	10	0,78
100	100	104	159	137 8 x Ø 11	26	10	1,26
125	125	129	183	161 8 x Ø 11	28	10	1,50
150	150	154	213	188 8 x Ø 14	28	8	2,14

**Hygienic – Flange Connections DIN 11853-2  
for Tubes acc. to DIN 11866 (Series A) and DIN 11850 (Series 2)**

**Flange Connection DIN (short)**

1.4301		1.4404		
DN	Price/EUR	Article No.	Price/EUR	Article No.
10	41,21	113K 00 40 1/1	43,06	113K 00 40 2/1
15	41,21	113K 00 41 1/1	43,21	113K 00 41 2/1
20	42,21	113K 00 42 1/1	43,71	113K 00 42 2/1
25	42,31	113K 00 43 1/1	43,91	113K 00 43 2/1
32	43,01	113K 00 44 1/1	44,41	113K 00 44 2/1
40	43,81	113K 00 45 1/1	45,91	113K 00 45 2/1
50	45,37	113K 00 46 1/1	48,37	113K 00 46 2/1
65	50,67	113K 00 09 1/1	57,27	113K 00 09 2/1
80	72,72	113K 00 10 1/1	82,82	113K 00 10 2/1
100	95,18	113K 00 12 1/1	110,68	113K 00 12 2/1
125	141,68	113K 00 13 1/1	153,58	113K 00 13 2/1
150	177,85	113K 00 15 1/1	195,00	113K 00 15 2/1

**Nut Flange DIN (short)**

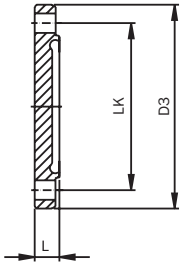
1.4301		1.4404		
DN	Price/EUR	Article No.	Price/EUR	Article No.
10	16,90	1132 00 40 1	18,00	1132 00 40 2
15	16,90	1132 00 41 1	18,00	1132 00 41 2
20	17,90	1132 00 42 1	18,50	1132 00 42 2
25	18,00	1132 00 43 1	18,70	1132 00 43 2
32	18,20	1132 00 44 1	19,00	1132 00 44 2
40	18,30	1132 00 45 1	19,50	1132 00 45 2
50	18,70	1132 00 46 1	20,00	1132 00 46 2
65	21,00	1132 00 09 1	24,00	1132 00 09 2
80	30,40	1132 00 10 1	35,20	1132 00 10 2
100	40,80	1132 00 12 1	48,60	1132 00 12 2
125	65,80	1132 00 13 1	69,80	1132 00 13 2
150	80,00	1132 00 15 1	88,90	1132 00 15 2

**Liner Flange DIN (short)**

1.4301		1.4404		
DN	Price/EUR	Article No.	Price/EUR	Article No.
10	17,90	1134 00 40 1	18,65	1134 00 40 2
15	17,90	1134 00 41 1	18,80	1134 00 41 2
20	17,90	1134 00 42 1	18,80	1134 00 42 2
25	17,90	1134 00 43 1	18,80	1134 00 43 2
32	18,40	1134 00 44 1	19,00	1134 00 44 2
40	19,10	1134 00 45 1	20,00	1134 00 45 2
50	19,80	1134 00 46 1	21,50	1134 00 46 2
65	21,20	1134 00 09 1	24,80	1134 00 09 2
80	30,40	1134 00 10 1	35,70	1134 00 10 2
100	40,80	1134 00 12 1	48,50	1134 00 12 2
125	60,00	1134 00 13 1	67,90	1134 00 13 2
150	78,00	1134 00 15 1	86,25	1134 00 15 2

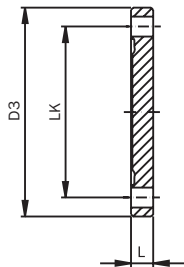
## Hygienic – Flange Connections DIN 11853-2 for Tubes acc. to DIN 11866 (Series A)

Blind Nut Flange DIN



DN	D3	LK	L	Weight [kg]
10	54	37 4 x Ø 9	11,5	0,04
15	59	42 4 x Ø 9	11,5	0,06
20	64	47 4 x Ø 9	11,5	0,08
25	70	53 4 x Ø 9	11,5	0,11
32	76	59 4 x Ø 9	11,5	0,14
40	82	65 4 x Ø 9	11,5	0,18
50	94	77 4 x Ø 9	11,5	0,26
65	113	95 8 x Ø 9	11,5	0,38
80	133	112 8 x Ø 11	13,5	0,63
100	159	137 8 x Ø 11	15,5	1,09
125	183	161 8 x Ø 11	15,5	1,59
150	213	188 8 x Ø 14	17,5	2,52

Blind Liner Flange DIN



DN	D3	LK	L	Weight [kg]
10	54	37 4 x Ø 9	10	0,16
15	59	42 4 x Ø 9	10	0,19
20	64	47 4 x Ø 9	10	0,22
25	70	53 4 x Ø 9	10	0,27
32	76	59 4 x Ø 9	10	0,32
40	82	65 4 x Ø 9	10	0,37
50	94	77 4 x Ø 9	10	0,48
65	113	95 8 x Ø 9	10	0,69
80	133	112 8 x Ø 11	12	1,15
100	159	137 8 x Ø 11	14	1,97
125	183	161 8 x Ø 11	14	2,62
150	213	188 8 x Ø 14	16	4,12

**Hygienic – Flange Connections DIN 11853-2  
for Tubes acc. to DIN 11866 (Series A)**

**Blind Nut Flange DIN**

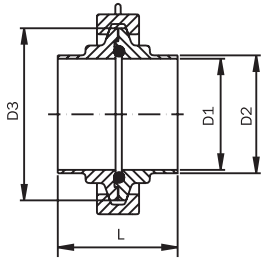
1.4404		
DN	Price/EUR	Article No.
10	17,70	1135 00 40 2
15	17,70	1135 00 41 2
20	18,00	1135 00 42 2
25	18,50	1135 00 43 2
32	22,00	1135 00 44 2
40	22,20	1135 00 45 2
50	24,60	1135 00 46 2
65	30,60	1135 00 09 2
80	38,60	1135 00 10 2
100	54,90	1135 00 12 2
125	72,00	1135 00 13 2
150	97,40	1135 00 15 2

**Blind Liner Flange DIN**

1.4404		
DN	Price/EUR	Article No.
10	15,40	1137 00 40 2
15	15,40	1137 00 41 2
20	15,40	1137 00 42 2
25	16,20	1137 00 43 2
32	17,55	1137 00 44 2
40	18,00	1137 00 45 2
50	20,70	1137 00 46 2
65	27,10	1137 00 09 2
80	36,60	1137 00 10 2
100	48,90	1137 00 12 2
125	69,30	1137 00 13 2
150	97,50	1137 00 15 2

## Hygienic – Clamp Connections DIN 11853-3 for Tubes acc. to DIN 11866 (Series A) and DIN 11850 (Series 2)

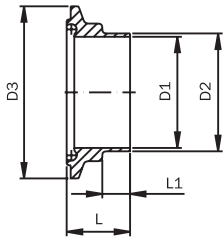
Clamp Connection DIN (short)



Is delivered in parts!

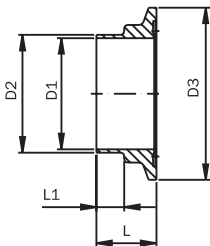
DN	D1	D2	D3	L	Weight [kg]
10	10	13	34	44	0,17
15	16	19	34	44	0,16
20	20	23	50,5	44	0,45
25	26	29	50,5	44	0,45
32	32	35	50,5	48	0,43
40	38	41	64	48	0,54
50	50	53	77,5	49	0,71
65	66	70	91	53	0,88
80	81	85	106	57	1,04
100	100	104	130	60	1,11

Clamp Nut DIN (short)



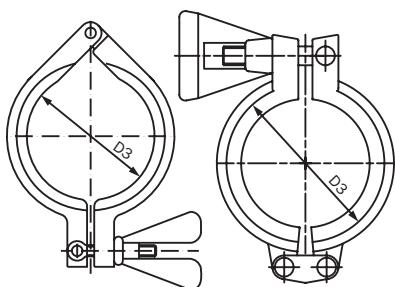
DN	D1	D2	D3	L	L1	Weight [kg]
10	10	13	34	23,5	10	0,04
15	16	19	34	23,5	10	0,03
20	20	23	50,5	23,5	10	0,07
25	26	29	50,5	23,5	10	0,07
32	32	35	50,5	25,5	10	0,06
40	38	41	64	25,5	10	0,10
50	50	53	77,5	26	10	0,14
65	66	70	91	28	10	0,17
80	81	85	106	30	10	0,21
100	100	104	130	31,5	10	0,23

Clamp Liner DIN (short)



DN	D1	D2	D3	L	L1	Weight [kg]
10	10	13	34	22	10	0,03
15	16	19	34	22	10	0,03
20	20	23	50,5	22	10	0,07
25	26	29	50,5	22	10	0,06
32	32	35	50,5	24	10	0,05
40	38	41	64	24	10	0,09
50	50	53	77,5	24,5	10	0,13
65	66	70	91	26,5	10	0,18
80	81	85	106	28,5	10	0,23
100	100	104	130	30	10	0,28

Heavy Duty Clamp



DN	D3	Weight [kg]
10	34	0,10
15	34	0,10
20	50,5	0,31
25	50,5	0,31
32	50,5	0,31
40	64	0,34
50	77,5	0,44
65	91	0,53
80	106	0,59
100	130	0,60



## Hygienic – Clamp Connections DIN 11853-3 for Tubes acc. to DIN 11866 (Series A) and DIN 11850 (Series 2)

### Clamp Connection DIN (short)

1.4301		1.4404		
DN	Price/EUR	Article No.	Price/EUR	Article No.
10	46,83	119K 00 40 1/1	48,18	119K 00 40 2/1
15	46,83	119K 00 41 1/1	48,68	119K 00 41 2/1
20	51,21	119K 00 42 1/1	53,76	119K 00 42 2/1
25	55,06	119K 00 43 1/1	57,61	119K 00 43 2/1
32	55,91	119K 00 44 1/1	58,56	119K 00 44 2/1
40	61,24	119K 00 45 1/1	64,34	119K 00 45 2/1
50	70,54	119K 00 46 1/1	74,39	119K 00 46 2/1
65	84,46	119K 00 09 1/1	90,76	119K 00 09 2/1
80	101,31	119K 00 10 1/1	110,01	119K 00 10 2/1
100	139,18	119K 00 12 1/1	152,46	119K 00 12 2/1

### Clamp Nut DIN (short)

1.4301		1.4404		
DN	Price/EUR	Article No.	Price/EUR	Article No.
10	9,60	1194 00 40 1	10,45	1194 00 40 2
15	9,60	1194 00 41 1	10,45	1194 00 41 2
20	11,70	1194 00 42 1	13,25	1194 00 42 2
25	14,05	1194 00 43 1	15,20	1194 00 43 2
32	14,50	1194 00 44 1	15,80	1194 00 44 2
40	16,20	1194 00 45 1	18,00	1194 00 45 2
50	18,05	1194 00 46 1	20,30	1194 00 46 2
65	25,70	1194 00 09 1	29,60	1194 00 09 2
80	32,70	1194 00 10 1	38,20	1194 00 10 2
100	45,90	1194 00 12 1	54,90	1194 00 12 2

### Clamp Liner DIN (short)

1.4301		1.4404		
DN	Price/EUR	Article No.	Price/EUR	Article No.
10	8,90	1192 00 40 1	9,40	1192 00 40 2
15	8,90	1192 00 41 1	9,90	1192 00 41 2
20	11,60	1192 00 42 1	12,60	1192 00 42 2
25	13,10	1192 00 43 1	14,50	1192 00 43 2
32	13,50	1192 00 44 1	14,85	1192 00 44 2
40	16,00	1192 00 45 1	17,30	1192 00 45 2
50	18,00	1192 00 46 1	19,60	1192 00 46 2
65	26,50	1192 00 09 1	28,90	1192 00 09 2
80	34,30	1192 00 10 1	37,50	1192 00 10 2
100	50,00	1192 00 12 1	54,28	1192 00 12 2

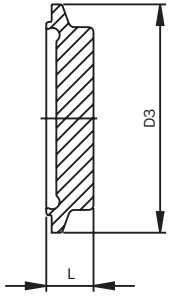
### Heavy Duty Clamp

1.4301 Single Pin			1.4301 Double Pin		
DN	Price/EUR	Article No.	Price/EUR	Article No.	
10	23,47	1111 00 04 2	25,82	1111 00 04 3	
15	23,47	1111 00 04 2	25,82	1111 00 04 3	
20	23,05	1111 00 07 2	25,36	1111 00 07 3	
25	23,05	1111 00 07 2	25,36	1111 00 07 3	
32	23,05	1111 00 07 2	25,36	1111 00 07 3	
40	24,18	1111 00 08 2	26,60	1111 00 08 3	
50	29,17	1111 00 59 2	32,09	1111 00 59 3	
65	26,84	1111 00 09 2	29,52	1111 00 09 3	
80	28,79	1111 00 10 2	31,67	1111 00 10 3	
100	37,40	1111 00 85 2	41,14	1111 00 85 3	

The size of the clamp is defined on the basis of the diameter of the flange D1 of the appropriate nominal width

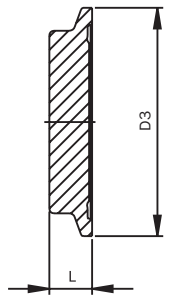
## Hygienic – Clamp Connections DIN 11853-3 for Tubes acc. to DIN 11866 (Series A)

Blind Nut Clamp DIN



DN	D3	L	Weight [kg]
10	34	13	0,04
15	34	13	0,04
20	50,5	13	0,10
25	50,5	13	0,10
32	50,5	13	0,10
40	64	13	0,15
50	77,5	15	0,22
65	91	15	0,29
80	106	15	0,41
100	130	15	0,53

Blind Liner Clamp DIN



DN	D3	L	Weight [kg]
10	34	11,5	0,04
15	34	11,5	0,04
20	50,5	11,5	0,10
25	50,5	11,5	0,10
32	50,5	11,5	0,10
40	64	11,5	0,15
50	77,5	13,5	0,22
65	91	13,5	0,29
80	106	13,5	0,41
100	130	13,5	0,53

**Hygienic – Clamp Connections DIN 11853-3  
for Tubes acc. to DIN 11866 (Series A)**

**Blind Nut Clamp DIN**

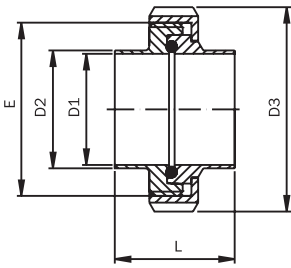
1.4404		
DN	Price/EUR	Article No.
10	9,00	1196 00 40 2
15	9,00	1196 00 41 2
20	1 2,10	1196 00 42 2
25	1 2,70	1196 00 43 2
32	14,10	1196 00 44 2
40	1 7,30	1196 00 45 2
50	2 5,30	1196 00 46 2
65	3 2,40	1196 00 09 2
80	3 7,20	1196 00 10 2
100	50,15	1196 00 12 2

**Blind Liner Clamp DIN**

1.4404		
DN	Price/EUR	Article No.
10	8,80	1195 00 40 2
15	8,80	1195 00 41 2
20	1 1,00	1195 00 42 2
25	1 1,70	1195 00 43 2
32	1 2,25	1195 00 44 2
40	1 3,20	1195 00 45 2
50	2 2,25	1195 00 46 2
65	2 7,30	1195 00 09 2
80	3 7,40	1195 00 10 2
100	4 8,05	1195 00 12 2

## Hygienic – Unions DIN 11853-1 for Tubes acc. to DIN 11866 (Series B)

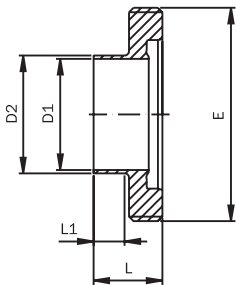
Union ISO (short)



Is delivered in parts!

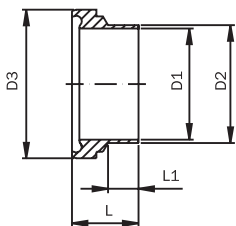
DN	D1	D2	D3	E	L	Weight [kg]
8	10,3	13,5	38	Rd 28 x 1/8"	32	0,13
10	14,0	17,2	44	Rd 34 x 1/8"	32	0,16
15	18,1	21,3	54	Rd 44 x 1/6"	34	0,24
20	23,7	26,9	63	Rd 52 x 1/6"	42	0,35
25	29,7	33,7	70	Rd 58 x 1/6"	48	0,45
32	38,4	42,4	78	Rd 65 x 1/6"	50	0,53
40	44,3	48,3	92	Rd 78 x 1/6"	54	0,72
50	56,3	60,3	112	Rd 95 x 1/6"	62	1,07
65	72,1	76,1	127	Rd 110 x 1/4"	72	1,67
80	84,3	88,9	148	Rd 130 x 1/4"	86	2,40

Male ISO (short)



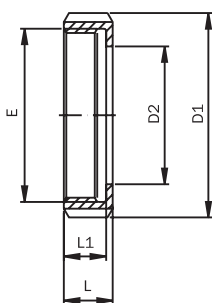
DN	D1	D2	E	L	L1	Weight [kg]
8	10,3	13,5	Rd 28 x 1/8"	19	5	0,04
10	14,0	17,2	Rd 34 x 1/8"	19	5	0,06
15	18,1	21,3	Rd 44 x 1/6"	21	5	0,11
20	23,7	26,9	Rd 52 x 1/6"	26	7	0,14
25	29,7	33,7	Rd 58 x 1/6"	30	9	0,16
32	38,7	42,4	Rd 65 x 1/6"	31	11	0,19
40	44,3	48,3	Rd 78 x 1/6"	31	12	0,27
50	56,3	60,3	Rd 95 x 1/6"	36	12	0,41
65	72,1	76,1	Rd 110 x 1/4"	42	17	0,70
80	84,3	88,9	Rd 130 x 1/4"	50	18	0,86

Liner ISO (short)



DN	D1	D2	D3	L	L1	Weight [kg]
8	10,3	13,5	21,9	17	5	0,02
10	14,0	17,2	27,9	17	5	0,02
15	18,1	21,3	35,9	18	5	0,05
20	23,7	26,9	42,9	22	7	0,08
25	29,7	33,7	48,9	25	9	0,11
32	38,4	42,4	54,9	26	11	0,12
40	44,3	48,3	66,9	30	12	0,20
50	56,3	60,3	84,9	34	12	0,33
65	72,1	76,1	98,9	38	17	0,42
80	84,3	88,9	118,9	46	18	0,74

Nut



DN	D1	D2	E	L	L1	Weight [kg]
8	38	19	Rd 28 x 1/8"	18	15	0,07
10	44	25	Rd 34 x 1/8"	18	15	0,08
15	54	31	Rd 44 x 1/6"	20	17	0,13
20	63	36	Rd 52 x 1/6"	21	18	0,18
25	70	42	Rd 58 x 1/6"	21	18	0,22
32	78	49	Rd 65 x 1/6"	21	18	0,25
40	92	62	Rd 78 x 1/6"	22	19	0,33
50	112	80	Rd 95 x 1/6"	25	21	0,55
65	127	94	Rd 110 x 1/4"	29	25	0,80
80	148	115	Rd 130 x 1/4"	31	26	1,08

## Hygienic – Unions DIN 11853-1 for Tubes acc. to DIN 11866 (Series B)

### Union ISO (short)

1.4301		1.4404		
DN	Price/EUR	Article No.	Price/EUR	Article No.
8	31,84	112K 00 75 1/1	32,54	112K 00 75 2/1
10	34,53	112K 00 76 1/1	35,43	112K 00 76 2/1
15	36,14	112K 00 77 1/1	37,14	112K 00 77 2/1
20	39,74	112K 00 78 1/1	42,14	112K 00 78 2/1
25	41,48	112K 00 79 1/1	43,08	112K 00 79 2/1
32	46,41	112K 00 80 1/1	50,31	112K 00 80 2/1
40	57,40	112K 00 81 1/1	60,30	112K 00 81 2/1
50	79,29	112K 00 82 1/1	83,59	112K 00 82 2/1
65	106,35	112K 00 83 1/1	111,15	112K 00 83 2/1
80	139,50	112K 00 84 1/1	144,70	112K 00 84 2/1

### Male ISO (short)

1.4301		1.4404		
DN	Price/EUR	Article No.	Price/EUR	Article No.
8	11,00	1122 00 75 1	11,50	1122 00 75 2
10	11,50	1122 00 76 1	12,00	1122 00 76 2
15	12,70	1122 00 77 1	13,30	1122 00 77 2
20	15,30	1122 00 78 1	16,20	1122 00 78 2
25	15,80	1122 00 79 1	16,40	1122 00 79 2
32	17,40	1122 00 80 1	20,70	1122 00 80 2
40	21,90	1122 00 81 1	24,00	1122 00 81 2
50	31,70	1122 00 82 1	35,00	1122 00 82 2
65	42,50	1122 00 83 1	46,00	1122 00 83 2
80	56,80	1122 00 84 1	59,00	1122 00 84 2

### Liner ISO (short)

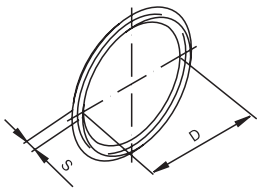
1.4301		1.4404		
DN	Price/EUR	Article No.	Price/EUR	Article No.
8	9,80	1124 00 75 1	10,00	1124 00 75 2
10	10,20	1124 00 76 1	10,60	1124 00 76 2
15	11,10	1124 00 77 1	11,50	1124 00 77 2
20	12,20	1124 00 78 1	13,70	1124 00 78 2
25	12,90	1124 00 79 1	13,90	1124 00 79 2
32	15,90	1124 00 80 1	16,50	1124 00 80 2
40	20,50	1124 00 81 1	21,30	1124 00 81 2
50	27,30	1124 00 82 1	28,30	1124 00 82 2
65	35,00	1124 00 83 1	36,30	1124 00 83 2
80	46,00	1124 00 84 1	49,00	1124 00 84 2

### Nut DIN 11851

1.4301		
DN	Price/EUR	Article No.
8	6,18	11003 000 010 10
10	7,97	11003 000 015 10
15	7,48	11003 000 020 10
20	7,38	11003 000 025 10
25	7,92	11003 000 032 10
32	8,25	11003 000 040 10
40	9,68	11003 000 050 10
50	14,82	11003 000 065 10
65	23,28	11003 000 080 10
80	30,92	11003 000 100 10

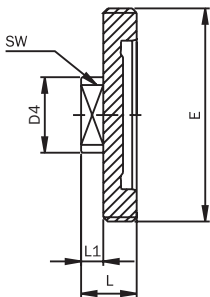
## Hygienic – Unions DIN 11853-1 for Tubes acc. to DIN 11866 (Series B)

O-Ring



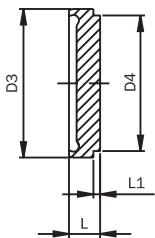
DN	D	S
8	12	3,5
10	16	3,5
15	20	3,5
20	26	3,5
25	32	5
32	40,5	5
40	46,5	5
50	58,5	5
65	73,5	5
80	85,5	5
100	111	5

Blind Male ISO



DN	D4	E	SW	L	L1	Weight [kg]
8	22	Rd 28 x 1/8"	17	24	12	0,07
10	22	Rd 34 x 1/8"	17	24	12	0,10
15	22	Rd 44 x 1/6"	17	24	10	0,16
20	40	Rd 52 x 1/6"	27	24	10	0,23
25	40	Rd 58 x 1/6"	27	24	10	0,25
32	40	Rd 65 x 1/6"	27	24	10	0,30
40	40	Rd 78 x 1/6"	27	24	10	0,39
50	48	Rd 95 x 1/6"	32	28	12	0,60
65	48	Rd 110 x 1/4"	32	28	8	1,07
80	48	Rd 130 x 1/4"	32	30	10	1,27

Blind Liner ISO



DN	D3	D4	L	L1	Weight [kg]
8	21,9	18	9	3	0,02
10	27,9	24	9	3	0,03
15	35,9	30	10	3	0,06
20	42,9	35	12	3	0,10
25	48,9	41	13	3	0,13
32	54,9	48	13	3	0,16
40	66,9	61	14	3	0,27
50	84,9	79	16	4	0,52
65	98,9	93	16	4	0,70
80	118,9	114	20	5	1,37

**Hygienic – Unions DIN 11853-1  
for Tubes acc. to DIN 11866 (Series B)**

**O-Ring**

EPDM		FPM			PTFE			
DN	Price for spare part /EUR	Article No.	Price for spare part /EUR	Article No.	Surcharge/EUR	Price for spare part /EUR	Article No.	Surcharge/EUR
8	4,86	1129 00 40 1	9,71	1129 00 40 2	4,86	11,18	1129 00 40 4	6,32
10	4,86	1129 00 76 1	9,71	1129 00 76 2	4,86	11,18	1129 00 76 4	6,32
15	4,86	1129 00 77 1	9,71	1129 00 77 2	4,86	11,18	1129 00 77 4	6,32
20	4,86	1129 00 78 1	9,71	1129 00 78 2	4,86	11,18	1129 00 78 4	6,32
25	4,86	1129 00 79 1	9,71	1129 00 79 2	4,86	11,18	1129 00 79 4	6,32
32	4,86	1129 00 80 1	9,71	1129 00 80 2	4,86	11,18	1129 00 80 4	6,32
40	5,32	1129 00 81 1	10,63	1129 00 81 2	5,32	12,24	1129 00 81 4	6,92
50	5,47	1129 00 82 1	10,94	1129 00 82 2	5,47	12,58	1129 00 82 4	7,11
65	5,57	1129 00 83 1	11,15	1129 00 83 2	5,57	12,81	1129 00 83 4	7,24
80	5,78	1129 00 84 1	11,56	1129 00 84 2	5,78	13,29	1129 00 84 4	7,51
100	6,85	1129 00 85 1	13,70	1129 00 85 2	6,85	15,76	1129 00 85 4	8,91

**Blind Male ISO**

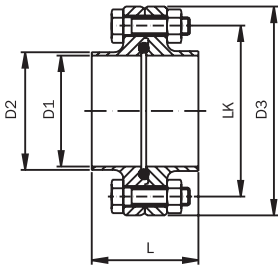
1.4404		
DN	Price/EUR	Article No.
8	18,25	1127 00 75 2
10	19,00	1127 00 76 2
15	20,70	1127 00 77 2
20	22,60	1127 00 78 2
25	24,10	1127 00 79 2
32	26,30	1127 00 80 2
40	37,10	1127 00 81 2
50	47,00	1127 00 82 2
65	56,00	1127 00 83 2
80	73,60	1127 00 84 2

**Blind Liner ISO**

1.4404		
DN	Price/EUR	Article No.
8	9,30	1125 00 75 2
10	9,30	1125 00 76 2
15	9,20	1125 00 77 2
20	10,70	1125 00 78 2
25	11,50	1125 00 79 2
32	13,00	1125 00 80 2
40	20,90	1125 00 81 2
50	26,90	1125 00 82 2
65	29,60	1125 00 83 2
80	45,80	1125 00 84 2

## Hygienic – Flange Connections DIN 11853-2 for Tubes acc. to DIN 11866 (Series B)

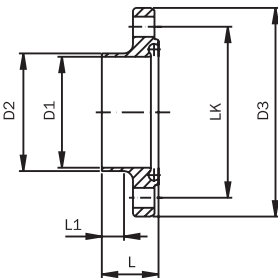
Flange Connection ISO (short)



Is delivered in parts!

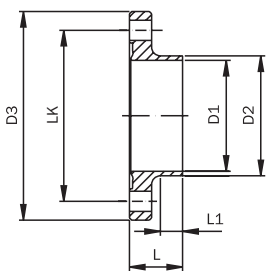
DN	D1	D2	D3	LK	L	Weight [kg]
8	10,3	13,5	54	37 4/M8 x 30	48	0,31
10	14,0	17,2	59	42 4/M8 x 30	48	0,37
15	18,1	21,3	62	45 4/M8 x 30	48	0,41
20	23,7	26,9	69	52 4/M8 x 30	48	0,50
25	29,7	33,7	74	57 4/M8 x 30	48	0,56
32	38,4	42,4	82	65 4/M8 x 30	48	0,65
40	44,3	48,3	88	71 4/M8 x 30	48	0,73
50	56,3	60,3	103	85 4/M8 x 30	48	0,94
65	72,1	76,1	125	104 8/M10 x 30	48	1,40
80	84,3	88,9	137	116 8/M10 x 35	52	1,69
100	109,7	114,3	168	146 8/M10 x 35	52	2,79

Nut Flange ISO (short)



DN	D1	D2	D3	LK	L	L1	Weight [kg]
8	10,3	13,5	54	37 4 x Ø 9	25,5	10	0,16
10	14,0	17,2	59	42 4 x Ø 9	25,5	10	0,19
15	18,1	21,3	62	45 4 x Ø 9	25,5	10	0,20
20	23,7	26,9	69	52 4 x Ø 9	25,5	10	0,25
25	29,7	33,7	74	57 4 x Ø 9	25,5	10	0,29
32	38,4	42,4	82	65 4 x Ø 9	25,5	10	0,33
40	44,3	48,3	88	71 4 x Ø 9	25,5	10	0,37
50	56,3	60,3	103	85 4 x Ø 9	25,5	10	0,48
65	72,1	76,1	125	104 8 x Ø 11	25,5	8	0,76
80	84,3	88,9	137	116 8 x Ø 11	27,5	10	0,86
100	109,7	114,3	168	146 8 x Ø 11	27,5	8	1,39

Liner Flange ISO (short)



DN	D1	D2	D3	LK	L	L1	Weight [kg]
8	10,3	13,5	54	37 4 x Ø 9	24	10	0,15
10	14,0	17,2	59	42 4 x Ø 9	24	10	0,18
15	18,1	21,3	62	45 4 x Ø 9	24	10	0,20
20	23,7	26,9	69	52 4 x Ø 9	24	10	0,25
25	29,7	33,7	74	57 4 x Ø 9	24	10	0,27
32	38,4	42,4	82	65 4 x Ø 9	24	10	0,32
40	44,3	48,3	88	71 4 x Ø 9	24	10	0,35
50	56,3	60,3	103	85 4 x Ø 9	24	10	0,46
65	72,1	76,1	125	104 8 x Ø 11	24	8	0,64
80	84,3	88,9	137	116 8 x Ø 11	26	10	0,83
100	109,7	114,3	168	146 8 x Ø 11	26	8	1,36



## Hygienic – Flange Connections DIN 11853-2 for Tubes acc. to DIN 11866 (Series B)

### Flange Connection ISO (short)

1.4301		1.4404		
DN	Price/EUR	Article No.	Price/EUR	Article No.
8	36,01	113K 00 75 1/1	41,96	113K 00 75 2/1
10	37,71	113K 00 76 1/1	43,26	113K 00 76 2/1
15	39,31	113K 00 77 1/1	44,81	113K 00 77 2/1
20	40,71	113K 00 78 1/1	44,81	113K 00 78 2/1
25	42,01	113K 00 79 1/1	48,51	113K 00 79 2/1
32	50,21	113K 00 80 1/1	54,71	113K 00 80 2/1
40	53,57	113K 00 81 1/1	58,87	113K 00 81 2/1
50	63,52	113K 00 82 1/1	73,52	113K 00 82 2/1
65	85,47	113K 00 83 1/1	96,57	113K 00 83 2/1
80	103,58	113K 00 84 1/1	121,18	113K 00 84 2/1
100	134,25	113K 00 85 1/1	157,75	113K 00 85 2/1

### Nut Flange ISO (short)

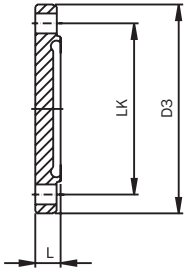
1.4301		1.4404		
DN	Price/EUR	Article No.	Price/EUR	Article No.
8	15,10	1132 00 75 1	16,90	1132 00 75 2
10	15,90	1132 00 76 1	18,20	1132 00 76 2
15	16,90	1132 00 77 1	19,60	1132 00 77 2
20	18,10	1132 00 78 1	19,60	1132 00 78 2
25	18,40	1132 00 79 1	22,30	1132 00 79 2
32	22,00	1132 00 80 1	25,00	1132 00 80 2
40	23,70	1132 00 81 1	26,00	1132 00 81 2
50	28,50	1132 00 82 1	34,10	1132 00 82 2
65	38,00	1132 00 83 1	45,50	1132 00 83 2
80	45,60	1132 00 84 1	55,00	1132 00 84 2
100	61,00	1132 00 85 1	72,50	1132 00 85 2

### Liner Flange ISO (short)

1.4301		1.4404		
DN	Price/EUR	Article No.	Price/EUR	Article No.
8	14,50	1134 00 75 1	18,65	1134 00 75 2
10	15,40	1134 00 76 1	18,65	1134 00 76 2
15	16,00	1134 00 77 1	18,80	1134 00 77 2
20	16,20	1134 00 78 1	18,80	1134 00 78 2
25	17,20	1134 00 79 1	19,80	1134 00 79 2
32	21,80	1134 00 80 1	23,30	1134 00 80 2
40	23,00	1134 00 81 1	26,00	1134 00 81 2
50	28,00	1134 00 82 1	32,40	1134 00 82 2
65	36,00	1134 00 83 1	39,60	1134 00 83 2
80	45,80	1134 00 84 1	54,00	1134 00 84 2
100	60,00	1134 00 85 1	72,00	1134 00 85 2

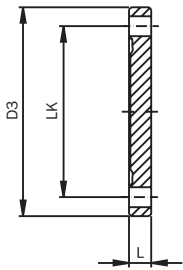
## Hygienic – Flange Connections DIN 11853-2 for Tubes acc. to DIN 11866 (Series B)

Blind Nut Flange ISO



DN	D1	LK	L	Weight [kg]
8	54	37 4 x Ø 9	11,5	0,16
10	59	42 4 x Ø 9	11,5	0,19
15	62	45 4 x Ø 9	11,5	0,21
20	69	52 4 x Ø 9	11,5	0,27
25	74	57 4 x Ø 9	11,5	0,30
32	82	65 4 x Ø 9	11,5	0,36
40	88	71 4 x Ø 9	11,5	0,42
50	103	85 4 x Ø 9	11,5	0,58
65	125	104 8 x Ø 11	13,5	1,00
80	137	116 8 x Ø 11	13,5	1,20
100	168	146 8 x Ø 11	15,5	2,17

Blind Liner Flange ISO



DN	D1	LK	L	Weight [kg]
8	54	37 4 x Ø 9	10	0,16
10	59	42 4 x Ø 9	10	0,19
15	62	45 4 x Ø 9	10	0,21
20	69	52 4 x Ø 9	10	0,26
25	74	57 4 x Ø 9	10	0,30
32	82	65 4 x Ø 9	10	0,37
40	88	71 4 x Ø 9	10	0,42
50	103	85 4 x Ø 9	10	0,59
65	125	104 8 x Ø 11	12	1,01
80	137	116 8 x Ø 11	12	1,22
100	168	146 8 x Ø 11	14	2,21

**Hygienic – Flange Connections DIN 11853-2  
for Tubes acc. to DIN 11866 (Series B)**

**Blind Nut Flange ISO**

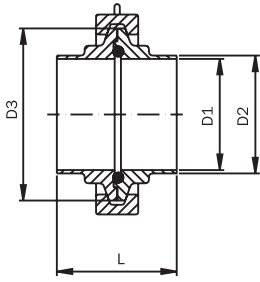
1.4404		
DN	Price/EUR	Article No.
8	17,70	1135 00 75 2
10	17,70	1135 00 76 2
15	17,70	1135 00 77 2
20	19,90	1135 00 78 2
25	20,80	1135 00 79 2
32	24,50	1135 00 80 2
40	26,70	1135 00 81 2
50	32,30	1135 00 82 2
65	45,20	1135 00 83 2
80	50,70	1135 00 84 2
100	67,20	1135 00 85 2

**Blind Liner Flange ISO**

1.4404		
DN	Price/EUR	Article No.
8	15,40	1137 00 75 2
10	15,40	1137 00 76 2
15	15,40	1137 00 77 2
20	19,45	1137 00 78 2
25	20,70	1137 00 79 2
32	23,40	1137 00 80 2
40	25,70	1137 00 81 2
50	31,10	1137 00 82 2
65	43,70	1137 00 83 2
80	48,40	1137 00 84 2
100	48,90	1137 00 85 2

## Hygienic – Clamp Connections DIN 11853-3 for Tubes acc. to DIN 11866 (Series B)

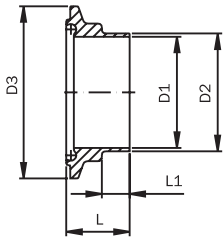
Clamp Connection ISO (short)



Is delivered in parts!

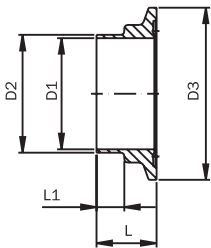
DN	D1	D2	D3	L	Weight [kg]
8	10,3	13,5	34	44	0,04
10	14,0	17,2	34	44	0,18
15	18,1	21,3	34	44	0,22
20	23,7	26,9	50,5	44	0,47
25	29,7	33,7	50,5	48	0,46
32	38,4	42,4	64	48	0,50
40	44,3	48,3	64	50	0,60
50	56,3	60,3	91	54	0,81
65	72,1	76,1	106	57	1,04
80	84,3	88,9	119	62	1,25

Clamp Nut ISO (short)



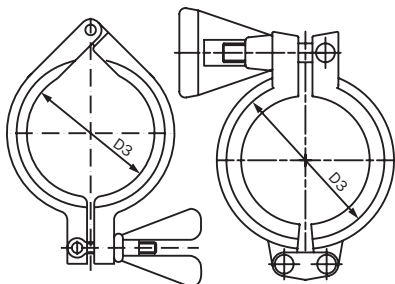
DN	D1	D2	D3	L	L1	Weight [kg]
8	10,3	13,5	34	23,5	10	0,04
10	14,0	17,2	34	23,5	10	0,04
15	18,1	21,3	34	23,5	10	0,08
20	23,7	26,9	50,5	23,5	10	0,08
25	29,7	33,7	50,5	25,5	10	0,07
32	38,4	42,4	64	25,5	10	0,11
40	44,3	48,3	64	26,5	10	0,14
50	56,3	60,3	91	28,5	10	0,19
65	72,1	76,1	106	30	10	0,24
80	84,3	88,9	119	32,5	10	0,29

Clamp Liner ISO (short)



DN	D1	D2	D3	L	L1	Weight [kg]
8	10,3	13,5	34	22	10	0,03
10	14,0	17,2	34	22	10	0,03
15	18,1	21,3	34	22	10	0,02
20	23,7	26,9	50,5	22	10	0,06
25	29,7	33,7	50,5	24	10	0,05
32	38,4	42,4	64	24	10	0,08
40	44,3	48,3	64	25	10	0,07
50	56,3	60,3	91	27	10	0,17
65	72,1	76,1	106	28,5	10	0,22
80	84,3	88,9	119	31	10	0,28

Heavy Duty Clamp



DN	D3	Weight [kg]
8	34	0,10
10	34	0,10
15	34	0,10
20	50,5	0,31
25	50,5	0,31
32	64	0,34
40	64	0,34
50	91	0,44
65	106	0,53
80	119	0,59

## Hygienic – Clamp Connections DIN 11853-3 for Tubes acc. to DIN 11866 (Series B)

### Clamp Connection ISO (short)

1.4301		1.4404		
DN	Price/EUR	Article No.	Price/EUR	Article No.
8	45,33	119K 00 75 1/1	48,78	119K 00 75 2/1
10	45,33	119K 00 76 1/1	48,78	119K 00 76 2/1
15	45,33	119K 00 77 1/1	48,78	119K 00 77 2/1
20	49,01	119K 00 78 1/1	55,06	119K 00 78 2/1
25	49,61	119K 00 79 1/1	59,06	119K 00 79 2/1
32	56,34	119K 00 80 1/1	61,64	119K 00 80 2/1
40	57,35	119K 00 81 1/1	68,35	119K 00 81 2/1
50	75,66	119K 00 82 1/1	77,46	119K 00 82 2/1
65	96,36	119K 00 83 1/1	98,76	119K 00 83 2/1
80	116,74	119K 00 84 1/1	119,04	119K 00 84 2/1

### Clamp Nut ISO (short)

1.4301		1.4404		
DN	Price/EUR	Article No.	Price/EUR	Article No.
8	8,60	1194 00 75 1	10,45	1194 00 75 2
10	8,60	1194 00 76 1	10,45	1194 00 76 2
15	8,60	1194 00 77 1	10,45	1194 00 77 2
20	10,70	1194 00 78 1	13,25	1194 00 78 2
25	11,00	1194 00 79 1	15,20	1194 00 79 2
32	13,90	1194 00 80 1	16,25	1194 00 80 2
40	14,20	1194 00 81 1	19,80	1194 00 81 2
50	22,90	1194 00 82 1	23,55	1194 00 82 2
65	31,40	1194 00 83 1	32,60	1194 00 83 2
80	40,90	1194 00 84 1	42,05	1194 00 84 2

### Clamp Liner ISO (short)

1.4301		1.4404		
DN	Price/EUR	Article No.	Price/EUR	Article No.
8	8,40	1192 00 75 1	10,00	1192 00 75 2
10	8,40	1192 00 76 1	10,00	1192 00 76 2
15	8,40	1192 00 77 1	10,00	1192 00 77 2
20	10,40	1192 00 78 1	13,90	1192 00 78 2
25	10,70	1192 00 79 1	15,95	1192 00 79 2
32	13,40	1192 00 80 1	16,35	1192 00 80 2
40	13,65	1192 00 81 1	19,05	1192 00 81 2
50	20,45	1192 00 82 1	21,60	1192 00 82 2
65	30,60	1192 00 83 1	31,80	1192 00 83 2
80	40,15	1192 00 84 1	41,30	1192 00 84 2

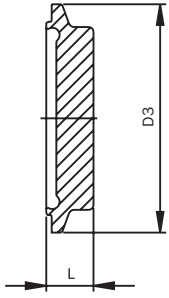
### Heavy Duty Clamp

1.4301 Single Pin			1.4301 Double Pin		
DN	Price/EUR	Article No.	Price/EUR	Article No.	
8	23,47	1111 00 04 2	25,82	1111 00 04 3	
10	23,47	1111 00 04 2	25,82	1111 00 04 3	
15	23,47	1111 00 04 2	25,36	1111 00 04 3	
20	23,05	1111 00 07 2	25,36	1111 00 07 3	
25	23,05	1111 00 07 2	25,36	1111 00 07 3	
32	24,18	1111 00 08 2	26,60	1111 00 08 3	
40	24,18	1111 00 08 2	32,09	1111 00 08 3	
50	26,84	1111 00 09 2	29,52	1111 00 09 3	
65	28,79	1111 00 10 2	31,67	1111 00 10 3	
80	29,91	1111 00 12 2	41,14	1111 00 12 3	

The size of the clamp is defined on the basis of the diameter of the flange D1 of the appropriate nominal width

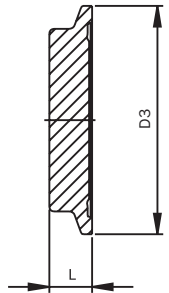
## Hygienic – Clamp Connections DIN 11853-3 for Tubes acc. to DIN 11866 (Series B)

Blind Nut Clamp ISO



DN	D3	L	Weight [kg]
8	34	13	0,04
10	34	13	0,04
15	34	13	0,10
20	50,5	13	0,10
25	50,5	13	0,10
32	64	13	0,15
40	64	13	0,22
50	91	15	0,29
65	106	15	0,41
80	119	15	0,53

Blind Liner Clamp ISO



DN	D3	L	Weight [kg]
8	34	11,5	0,04
10	34	11,5	0,04
15	34	11,5	0,10
20	50,5	11,5	0,10
25	50,5	11,5	0,10
32	64	11,5	0,15
40	64	11,5	0,22
50	91	13,5	0,29
65	106	13,5	0,41
80	119	13,5	0,53

**Hygienic – Clamp Connections DIN 11853-3  
for Tubes acc. to DIN 11866 (Series B)**

**Blind Nut Clamp ISO**

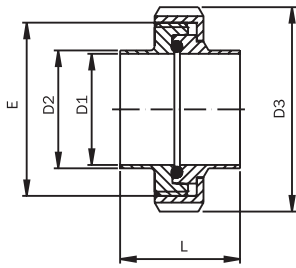
1.4404		
DN	Price/EUR	Article No.
8	9,10	1196 00 75 2
10	9,10	1196 00 76 2
15	1 1,00	1196 00 77 2
20	12,10	1196 00 78 2
25	1 2,70	1196 00 79 2
32	1 4,70	1196 00 80 2
40	17,30	1196 00 81 2
50	2 8,00	1196 00 82 2
65	3 6,80	1196 00 83 2
80	4 1,80	1196 00 84 2

**Blind Liner Clamp ISO**

1.4404		
DN	Price/EUR	Article No.
8	10,00	1195 00 75 2
10	10,00	1195 00 76 2
15	1 0,60	1195 00 77 2
20	1 1,00	1195 00 78 2
25	1 1,70	1195 00 79 2
32	1 4,20	1195 00 80 2
40	1 4,20	1195 00 81 2
50	2 8,30	1195 00 82 2
65	3 4,40	1195 00 83 2
80	4 0,20	1195 00 84 2

## Hygienic – Unions DIN 11853-1 for Tubes acc. to DIN 11866 (Series C)

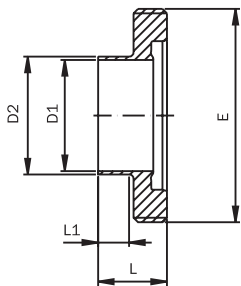
Union Inch (short)



Is delivered in parts!

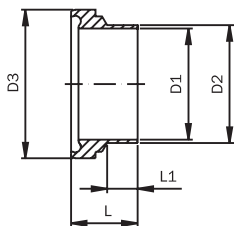
DN	D1	D2	D3	E	L	Weight [kg]
1/2"	9,4	12,7	38	Rd 28 x 1/8"	32	0,19
3/4"	15,75	19,05	44	Rd 34 x 1/8"	32	0,26
1"	22,2	25,4	63	Rd 52 x 1/6"	42	0,41
1 1/2"	34,8	38,1	78	Rd 65 x 1/6"	50	0,57
2"	47,5	50,8	92	Rd 78 x 1/6"	54	0,76
2 1/2"	60,2	63,5	112	Rd 95 x 1/6"	62	1,26
3"	72,9	76,2	127	Rd 110 x 1/4"	72	1,85
4"	97,38	101,6	148	Rd 130 x 1/4"	86	2,36

Male Inch (short)



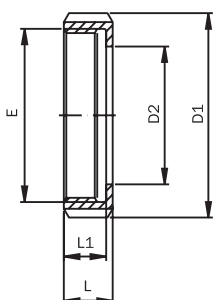
DN	D1	D2	E	L	L1	Weight [kg]
1/2"	9,4	12,7	Rd 28 x 1/8"	19	5	0,04
3/4"	15,75	19,05	Rd 34 x 1/8"	19	5	0,06
1"	22,2	25,4	Rd 52 x 1/6"	26	10	0,15
1 1/2"	34,8	38,1	Rd 65 x 1/6"	31	15	0,20
2"	47,5	50,8	Rd 78 x 1/6"	31	15	0,26
2 1/2"	60,2	63,5	Rd 95 x 1/6"	36	18	0,39
3"	72,9	76,2	Rd 110 x 1/4"	42	18	0,67
4"	97,38	101,6	Rd 130 x 1/4"	50	26	0,75

Liner Inch (short)



DN	D1	D2	D3	L	L1	Weight [kg]
1/2"	9,4	12,7	21,9	17	6,5	0,02
3/4"	15,75	19,05	27,9	17	6,5	0,02
1"	22,2	25,4	42,9	22	8	0,08
1 1/2"	34,8	38,1	54,9	26	9,5	0,12
2"	47,5	50,8	66,9	30	12,5	0,17
2 1/2"	60,2	63,5	84,9	34	21	0,32
3"	72,9	76,2	98,9	38	17	0,38
4"	97,38	101,6	118,9	46	21	0,53

Nut



DN	D1	D2	E	L	L1	Weight [kg]
1/2"	38	19	Rd 28 x 1/8"	18	15	0,07
3/4"	44	25	Rd 34 x 1/8"	18	15	0,08
1"	63	36	Rd 52 x 1/6"	21	18	0,18
1 1/2"	78	49	Rd 65 x 1/6"	21	18	0,25
2"	92	62	Rd 78 x 1/6"	22	19	0,33
2 1/2"	112	80	Rd 95 x 1/6"	25	21	0,55
3"	127	94	Rd 110 x 1/4"	29	25	0,80
4"	148	115	Rd 130 x 1/4"	31	26	1,08



## Hygienic – Unions DIN 11853-1 for Tubes acc. to DIN 11866 (Series C)

### Union Inch (short)

1.4301		1.4404		
DN	Price/EUR	Article No.	Price/EUR	Article No.
1/2"	28,34	112K 00 89 1/1	30,94	112K 00 89 2/1
3/4"	31,23	112K 00 90 1/1	33,53	112K 00 90 2/1
1"	31,34	112K 00 91 1/1	33,74	112K 00 91 2/1
1 1/2"	37,51	112K 00 92 1/1	42,51	112K 00 92 2/1
2"	41,85	112K 00 93 1/1	47,40	112K 00 93 2/1
2 1/2"	62,19	112K 00 94 1/1	70,64	112K 00 94 2/1
3"	86,40	112K 00 95 1/1	99,70	112K 00 95 2/1
4"	119,40	112K 00 96 1/1	140,80	112K 00 96 2/1

### Male Inch (short)

1.4301		1.4404		
DN	Price/EUR	Article No.	Price/EUR	Article No.
1/2"	9,40	1122 00 89 1	11,50	1122 00 89 2
3/4"	10,30	1122 00 90 1	12,00	1122 00 90 2
1"	10,40	1122 00 91 1	12,70	1122 00 91 2
1 1/2"	11,70	1122 00 92 1	15,80	1122 00 92 2
2"	13,40	1122 00 93 1	17,00	1122 00 93 2
2 1/2"	19,75	1122 00 94 1	25,90	1122 00 94 2
3"	27,90	1122 00 95 1	36,30	1122 00 95 2
4"	41,10	1122 00 96 1	54,70	1122 00 96 2

### Liner Inch (short)

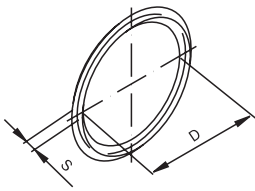
1.4301		1.4404		
DN	Price/EUR	Article No.	Price/EUR	Article No.
1/2"	7,90	1124 00 89 1	8,40	1124 00 89 2
3/4"	8,10	1124 00 90 1	8,70	1124 00 90 2
1"	8,70	1124 00 91 1	8,80	1124 00 91 2
1 1/2"	12,70	1124 00 92 1	13,60	1124 00 92 2
2"	13,45	1124 00 93 1	15,40	1124 00 93 2
2 1/2"	22,10	1124 00 94 1	24,60	1124 00 94 2
3"	29,70	1124 00 95 1	34,60	1124 00 95 2
4"	41,50	1124 00 96 1	49,30	1124 00 96 2

### Nut DIN 11851

1.4301		
DN	Price/EUR	Article No.
1/2"	6,18	11003 000 010 10
3/4"	7,97	11003 000 015 10
1"	7,38	11003 000 025 10
1 1/2"	8,25	11003 000 040 10
2"	9,68	11003 000 050 10
2 1/2"	14,82	11003 000 065 10
3"	23,28	11003 000 080 10
4"	30,92	11003 000 100 10

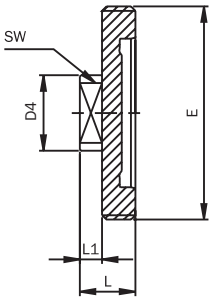
## Hygienic – Unions DIN 11853-1 for Tubes acc. to DIN 11866 (Series C)

O-Ring



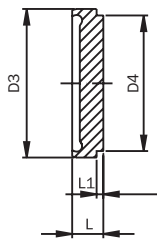
DN	D	S
1/2"	12	3,5
3/4"	18	3,5
1"	24	3,5
1 1/2"	37	5
2"	50	5
2 1/2"	62	5
3"	75	5
4"	100	5

Blind Male Inch



DN	D4	E	SW	L	L1	Weight [kg]
1/2"	22	Rd 28 x 1/8"	17	24	12	0,07
3/4"	22	Rd 34 x 1/8"	17	24	12	0,10
1"	40	Rd 52 x 1/6"	27	24	10	0,23
1 1/2"	40	Rd 65 x 1/6"	27	24	10	0,30
2"	40	Rd 78 x 1/6"	27	24	10	0,39
2 1/2"	48	Rd 95 x 1/6"	32	28	12	0,60
3"	48	Rd 110 x 1/4"	32	28	12	1,07
4"	48	Rd 130 x 1/4"	32	30	10	1,27

Blind Liner Inch



DN	D3	D4	L	L1	Weight [kg]
1/2"	21,9	18	9	3	0,02
3/4"	27,9	24	9	3	0,03
1"	42,9	35	12	3	0,10
1 1/2"	54,9	48	13	3	0,16
2"	66,9	61	14	3	0,27
2 1/2"	84,9	79	16	4	0,52
3"	98,9	93	16	4	0,70
4"	118,9	114	20	5	1,37

**Hygienic – Unions DIN 11853-1  
for Tubes acc. to DIN 11866 (Series C)**

**O-Ring**

DN	EPDM		FPM			PTFE		
	Price for spare part /EUR	Article No.	Price for spare part /EUR	Article No.	Surcharge/EUR	Price for spare part /EUR	Article No.	Surcharge/EUR
1/2"	4,86	1129 00 40 1	9,71	1129 00 40 2	4,86	11,18	1129 00 40 4	6,32
3/4"	4,86	1129 00 41 1	9,71	1129 00 41 2	4,86	11,18	1129 00 41 4	6,32
1"	4,86	1129 00 91 1	9,71	1129 00 91 2	4,86	11,18	1129 00 91 4	6,32
1 1/2"	4,86	1129 00 92 1	9,71	1129 00 92 2	4,86	11,18	1129 00 92 4	6,32
2"	5,32	1129 00 93 1	10,63	1129 00 93 2	5,32	12,24	1129 00 93 4	6,92
2 1/2"	5,52	1129 00 94 1	11,04	1129 00 94 2	5,52	12,70	1129 00 94 4	7,18
3"	5,52	1129 00 95 1	11,04	1129 00 95 2	5,52	12,70	1129 00 95 4	7,18
4"	5,88	1129 00 96 1	11,76	1129 00 96 2	5,88	13,52	1129 00 96 4	7,64

**Blind Male Inch**

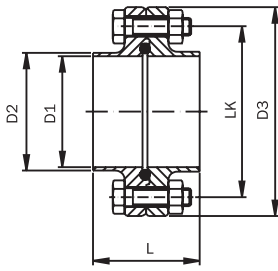
1.4404		
DN	Price/EUR	Article No.
1/2"	18,80	1127 00 89 2
3/4"	18,90	1127 00 90 2
1"	22,80	1127 00 91 2
1 1/2"	26,10	1127 00 92 2
2"	36,80	1127 00 93 2
2 1/2"	46,60	1127 00 94 2
3"	55,50	1127 00 95 2
4"	72,80	1127 00 96 2

**Blind Liner Inch**

1.4404		
DN	Price/EUR	Article No.
1/2"	9,30	1125 00 89 2
3/4"	9,30	1125 00 90 2
1"	10,70	1125 00 91 2
1 1/2"	13,30	1125 00 92 2
2"	20,80	1125 00 93 2
2 1/2"	27,00	1125 00 94 2
3"	32,40	1125 00 95 2
4"	46,10	1125 00 96 2

## Hygienic – Flange Connections DIN 11853-2 for Tubes acc. to DIN 11866 (Series C)

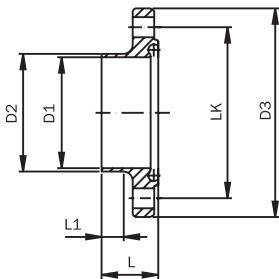
Flange Connection Inch (short)



Is delivered in parts!

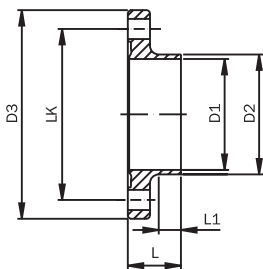
DN	D1	D2	D3	LK	L	Weight [kg]
1/2"	9,4	12,7	54	37 4/M8 x 30	48	0,31
3/4"	15,75	19,05	59	42 4/M8 x 30	48	0,37
1"	22,2	25,4	66	49 4/M8 x 30	48	0,45
1 1/2"	34,8	38,1	79	62 4/M8 x 30	48	0,61
2"	47,5	50,8	92	75 4/M8 x 30	48	0,77
2 1/2"	60,2	63,5	107	89 8/M8 x 30	48	0,94
3"	72,9	76,2	125	104 8/M10 x 30	48	1,43
4"	97,38	101,6	157	135 8/M10 x 35	52	2,53

Nut Flange Inch (short)



DN	D1	D2	D3	LK	L	L1	Weight [kg]
1/2"	9,4	12,7	54	37 4 x Ø 9	25,5	10	0,16
3/4"	15,75	19,05	59	42 4 x Ø 9	25,5	10	0,19
1"	22,2	25,4	66	49 4 x Ø 9	25,5	10	0,23
1 1/2"	34,8	38,1	79	62 4 x Ø 9	25,5	10	0,31
2"	47,5	50,8	92	75 4 x Ø 9	25,5	10	0,39
2 1/2"	60,2	63,5	107	89 8 x Ø 9	25,5	10	0,48
3"	72,9	76,2	125	104 8 x Ø 11	25,5	8	0,73
4"	97,38	101,6	157	135 8 x Ø 11	27,5	8	1,28

Liner Flange Inch (short)



DN	D1	D2	D3	LK	L	L1	Weight [kg]
1/2"	9,4	12,7	54	37 4 x Ø 9	24	10	0,15
3/4"	15,75	19,05	59	42 4 x Ø 9	24	10	0,18
1"	22,2	25,4	66	49 4 x Ø 9	24	10	0,22
1 1/2"	34,8	38,1	79	62 4 x Ø 9	24	10	0,30
2"	47,5	50,8	92	75 4 x Ø 9	24	10	0,37
2 1/2"	60,2	63,5	107	89 8 x Ø 9	24	10	0,46
3"	72,9	76,2	125	104 8 x Ø 11	24	8	0,70
4"	97,38	101,6	157	135 8 x Ø 11	26	8	1,25

## Hygienic – Flange Connections DIN 11853-2 for Tubes acc. to DIN 11866 (Series C)

### Flange Connection Inch (short)

1.4301		1.4404		
DN	Price/EUR	Article No.	Price/EUR	Article No.
1/2"	34,91	113K 00 89 1/1	43,06	113K 00 89 2/1
3/4"	36,36	113K 00 90 1/1	43,21	113K 00 90 2/1
1"	43,21	113K 00 91 1/1	46,81	113K 00 91 2/1
1 1/2"	47,46	113K 00 92 1/1	56,96	113K 00 92 2/1
2"	57,07	113K 00 93 1/1	61,17	113K 00 93 2/1
2 1/2"	70,97	113K 00 94 1/1	79,97	113K 00 94 2/1
3"	93,17	113K 00 95 1/1	107,22	113K 00 95 2/1
4"	112,18	113K 00 96 1/1	129,48	113K 00 96 2/1

### Nut Flange Inch (short)

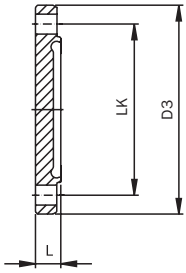
1.4301		1.4404		
DN	Price/EUR	Article No.	Price/EUR	Article No.
1/2"	14,50	1132 00 89 1	18,00	1132 00 89 2
3/4"	15,35	1132 00 90 1	18,00	1132 00 90 2
1"	18,60	1132 00 91 1	20,40	1132 00 91 2
1 1/2"	20,70	1132 00 92 1	27,95	1132 00 92 2
2"	25,30	1132 00 93 1	28,50	1132 00 93 2
2 1/2"	31,40	1132 00 94 1	35,90	1132 00 94 2
3"	41,00	1132 00 95 1	48,10	1132 00 95 2
4"	50,10	1132 00 96 1	58,80	1132 00 96 2

### Liner Flange Inch (short)

1.4301		1.4404		
DN	Price/EUR	Article No.	Price/EUR	Article No.
1/2"	14,00	1134 00 89 1	18,65	1134 00 89 2
3/4"	14,60	1134 00 90 1	18,80	1134 00 90 2
1"	18,20	1134 00 91 1	20,00	1134 00 91 2
1 1/2"	20,35	1134 00 92 1	22,60	1134 00 92 2
2"	24,90	1134 00 93 1	25,80	1134 00 93 2
2 1/2"	31,00	1134 00 94 1	35,50	1134 00 94 2
3"	40,75	1134 00 95 1	47,70	1134 00 95 2
4"	49,80	1134 00 96 1	58,40	1134 00 96 2

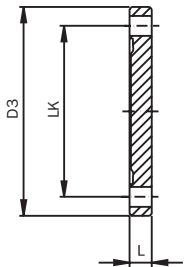
## Hygienic – Flange Connections DIN 11853-2 for Tubes acc. to DIN 11866 (Series C)

Blind Nut Flange Inch



DN	D3	LK	L	Weight [kg]
1/2"	54	37 4 x Ø 9	11,5	0,18
3/4"	59	42 4 x Ø 9	11,5	0,22
1"	66	49 4 x Ø 9	11,5	0,24
1 1/2"	79	62 4 x Ø 9	11,5	0,34
2"	92	75 4 x Ø 9	11,5	0,46
2 1/2"	107	89 8 x Ø 9	11,5	0,60
3"	125	104 8 x Ø 11	13,5	1,00
4"	157	135 8 x Ø 11	15,5	1,90

Blind Liner Flange Inch



DN	D3	LK	L	Weight [kg]
1/2"	54	37 4 x Ø 9	10	0,16
3/4"	59	42 4 x Ø 9	10	0,19
1"	66	49 4 x Ø 9	10	0,24
1 1/2"	79	62 4 x Ø 9	10	0,34
2"	92	75 4 x Ø 9	10	0,46
2 1/2"	107	89 8 x Ø 9	10	0,61
3"	125	104 8 x Ø 11	12	1,01
4"	157	135 8 x Ø 11	14	1,92

**Hygienic – Flange Connections DIN 11853-2  
for Tubes acc. to DIN 11866 (Series C)**

**Blind Nut Flange Inch**

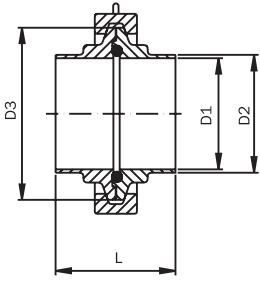
1.4404		
DN	Price/EUR	Article No.
1/2"	17,70	1135 00 89 2
3/4"	17,70	1135 00 90 2
1"	19,50	1135 00 91 2
1 1/2"	22,20	1135 00 92 2
2"	27,00	1135 00 93 2
2 1/2"	32,70	1135 00 94 2
3"	43,30	1135 00 95 2
4"	61,10	1135 00 96 2

**Blind Liner Flange Inch**

1.4404		
DN	Price/EUR	Article No.
1/2"	15,40	1137 00 89 2
3/4"	15,40	1137 00 90 2
1"	20,00	1137 00 91 2
1 1/2"	24,00	1137 00 92 2
2"	28,00	1137 00 93 2
2 1/2"	34,80	1137 00 94 2
3"	45,50	1137 00 95 2
4"	63,90	1137 00 96 2

## Hygienic – Clamp Connections DIN 11853-3 for Tubes acc. to DIN 11866 (Series C)

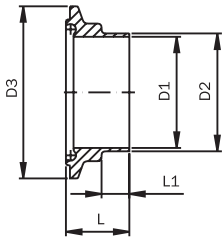
Clamp Connection Inch (short)



Is delivered in parts!

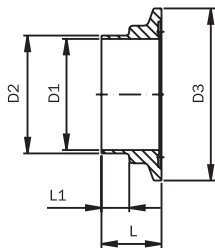
DN	D1	D2	D3	L	Weight [kg]
1/2"	9,4	12,7	34	44	0,18
3/4"	15,75	19,05	34	44	0,18
1"	22,1	25,4	50,5	44	0,48
1 1/2"	34,8	38,1	64	48	0,47
2"	47,5	50,8	77,5	49	0,46
2 1/2"	60,2	63,5	91	55	0,57
3"	72,9	76,2	106	57	0,74
4"	97,38	101,6	130	59	0,99

Clamp Nut Inch (short)



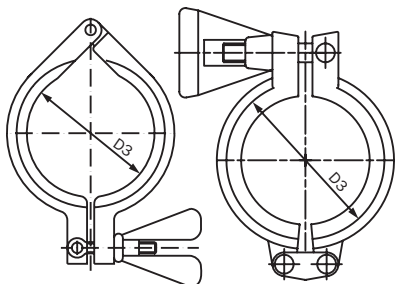
DN	D1	D2	D3	L	L1	Weight [kg]
1/2"	9,4	12,7	34	23,5	10	0,04
3/4"	15,75	19,05	34	23,5	10	0,03
1"	22,1	25,4	50,5	23,5	10	0,08
1 1/2"	34,8	38,1	64	25,5	10	0,11
2"	47,5	50,8	77,5	26	10	0,14
2 1/2"	60,2	63,5	91	29	10	0,19
3"	72,9	76,2	106	30	10	0,27
4"	97,38	101,6	130	31	10	0,34

Clamp Liner Inch (short)



DN	D1	D2	D3	L	L1	Weight [kg]
1/2"	9,4	12,7	34	22	10	0,03
3/4"	15,75	19,05	34	22	10	0,02
1"	22,1	25,4	50,5	22	10	0,06
1 1/2"	34,8	38,1	64	24	10	0,09
2"	47,5	50,8	77,5	24,5	10	0,13
2 1/2"	60,2	63,5	91	27,5	10	0,18
3"	72,9	76,2	106	28,5	10	0,24
4"	97,38	101,6	130	29,5	10	0,35

Heavy Duty Clamp



DN	D3	Weight [kg]
1/2"	34	0,10
3/4"	34	0,10
1"	50,5	0,31
1 1/2"	64	0,31
2"	77,5	0,31
2 1/2"	91	0,34
3"	106	0,44
4"	130	0,53



## Hygienic – Clamp Connections DIN 11853-3 for Tubes acc. to DIN 11866 (Series C)

### Clamp Connection Inch (short)

1.4301		1.4404		
DN	Price/EUR	Article No.	Price/EUR	Article No.
1/2"	47,13	119K 00 89 1/1	48,83	119K 00 89 2/1
3/4"	47,13	119K 00 90 1/1	48,83	119K 00 90 2/1
1"	49,21	119K 00 91 1/1	57,61	119K 00 91 2/1
1 1/2"	55,24	119K 00 92 1/1	64,34	119K 00 92 2/1
2"	65,89	119K 00 93 1/1	74,39	119K 00 93 2/1
2 1/2"	78,26	119K 00 94 1/1	90,86	119K 00 94 2/1
3"	95,91	119K 00 95 1/1	110,01	119K 00 95 2/1
4"	134,43	119K 00 96 1/1	152,46	119K 00 96 2/1

### Clamp Nut Inch (short)

1.4301		1.4404		
DN	Price/EUR	Article No.	Price/EUR	Article No.
1/2"	9,90	1194 00 89 1	10,60	1194 00 89 2
3/4"	9,90	1194 00 90 1	10,60	1194 00 90 2
1"	10,50	1194 00 91 1	15,20	1194 00 91 2
1 1/2"	13,00	1194 00 92 1	18,00	1194 00 92 2
2"	16,00	1194 00 93 1	20,30	1194 00 93 2
2 1/2"	22,90	1194 00 94 1	29,60	1194 00 94 2
3"	31,00	1194 00 95 1	38,20	1194 00 95 2
4"	45,00	1194 00 96 1	54,90	1194 00 96 2

### Clamp Liner Inch (short)

1.4301		1.4404		
DN	Price/EUR	Article No.	Price/EUR	Article No.
1/2"	8,90	1192 00 89 1	9,90	1192 00 89 2
3/4"	8,90	1192 00 90 1	9,90	1192 00 90 2
1"	10,80	1192 00 91 1	14,50	1192 00 91 2
1 1/2"	13,20	1192 00 92 1	17,30	1192 00 92 2
2"	15,40	1192 00 93 1	19,60	1192 00 93 2
2 1/2"	23,00	1192 00 94 1	28,90	1192 00 94 2
3"	30,60	1192 00 95 1	37,50	1192 00 95 2
4"	46,15	1192 00 96 1	54,28	1192 00 96 2

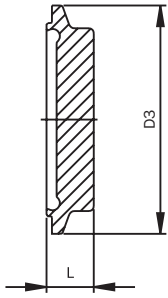
### Heavy Duty Clamp

1.4301 Single Pin			1.4301 Double Pin		
DN	Price/EUR	Article No.	Price/EUR	Article No.	
1/2"	23,47	1111 00 04 2	25,82	1111 00 04 3	
3/4"	23,47	1111 00 04 2	25,82	1111 00 04 3	
1"	23,05	1111 00 07 2	25,36	1111 00 07 3	
1 1/2"	24,18	1111 00 08 2	26,60	1111 00 08 3	
2"	29,17	1111 00 59 2	32,09	1111 00 59 3	
2 1/2"	26,84	1111 00 09 2	29,52	1111 00 09 3	
3"	28,79	1111 00 10 2	31,67	1111 00 10 3	
4"	37,40	1111 00 85 2	41,14	1111 00 85 3	

The size of the clamp is defined on the basis of the diameter of the flange D1 of the appropriate nominal width

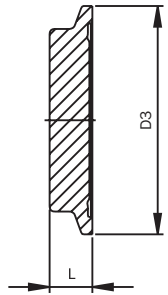
## Hygienic – Clamp Connections DIN 11853-3 for Tubes acc. to DIN 11866 (Series C)

Blind Nut Clamp Inch



DN	D3	L	Weight [kg]
1/2"	34	13	0,04
3/4"	34	13	0,04
1"	50,5	13	0,10
1 1/2"	64	13	0,10
2"	77,5	15	0,10
2 1/2"	91	15	0,15
3"	106	15	0,22
4"	130	15	0,29

Blind Liner Clamp Inch



DN	D3	L	Weight [kg]
1/2"	34	11,5	0,04
3/4"	34	11,5	0,04
1"	50,5	11,5	0,10
1 1/2"	64	11,5	0,10
2"	77,5	13,5	0,10
2 1/2"	91	13,5	0,15
3"	106	13,5	0,22
4"	130	13,5	0,29

**Hygienic – Clamp Connections DIN 11853-3  
for Tubes acc. to DIN 11866 (Series C)**

**Blind Nut Clamp Inch**

1.4404		
DN	Price/EUR	Article No.
1/2"	10,20	1196 00 89 2
3/4"	10,20	1196 00 90 2
1"	12,70	1196 00 91 2
1 1/2"	17,30	1196 00 92 2
2"	25,30	1196 00 93 2
2 1/2"	32,40	1196 00 94 2
3"	37,20	1196 00 95 2
4"	50,15	1196 00 96 2

**Blind Liner Clamp Inch**

1.4404		
DN	Price/EUR	Article No.
1/2"	10,00	1195 00 89 2
3/4"	10,00	1195 00 90 2
1"	11,70	1195 00 91 2
1 1/2"	14,50	1195 00 92 2
2"	23,60	1195 00 93 2
2 1/2"	28,50	1195 00 94 2
3"	34,50	1195 00 95 2
4"	44,90	1195 00 96 2

## Technical Information

Name	EPDM (Ethylene-Propylene- Dienemonomers)	FPM (Viton®)	PTFE (Polytetrafluorethylene)
Color	black	black	white
Material description	propylene and a minor share of diene	polymer from vinylidene fluoride	Thermoplastic polymer made of tetrafluorethylene
Application temperature	permanent application at minus 40 °C to 140 °C	permanent application at minus 20 °C to 200 °C	Physiologically harmless up to 200 °C, applicable from -200 °C up to +260 °C
other upon request	in situations of mechanical strain: steam sterilizable up to 140 °C strain up 0 °C to 140 °C	in situations of mechanical strain: steam sterilizable shortly up to 130 °C strain up 0 °C to 150 °C	in situations of mechanical strain: strain up 0 °C to 140 °C
typical fields of application	good swelling resistance at:	good swelling resistance at:	good swelling resistance for nearly all parts
	<ul style="list-style-type: none"> <li>diluted inorganic and organic acids, bases, polar organic media, media with oxidizing effects, alkaline solutions and ketones</li> </ul>	<ul style="list-style-type: none"> <li>mineral oils</li> <li>vegetable and animal oils</li> </ul>	Smooth surface and repellent, thus no adherence of residues
	<ul style="list-style-type: none"> <li>in hot water and steam up to 130 °C</li> </ul>	<ul style="list-style-type: none"> <li>fats (also particular additives)</li> </ul>	chemical resistance better than with all other elastomers
	good resistance to ozone, ageing and weathering	<ul style="list-style-type: none"> <li>aliphatic and aromatic hydrocarbons</li> <li>fuels</li> </ul>	very good friction values compared to counterface materials <ul style="list-style-type: none"> <li>hardly flammable</li> </ul>
application limits	not applicable for: <ul style="list-style-type: none"> <li>vegetable and animal oils</li> </ul>	strong swelling with: <ul style="list-style-type: none"> <li>polar solvents such as acetone, methylketone, ethyl acetate, diethylether</li> </ul>	not resistant to: <ul style="list-style-type: none"> <li>liquid alkali metals and some fluorine compounds in connection with high pressure and temperature</li> </ul>
	<ul style="list-style-type: none"> <li>aliphatic, aromatic and chlorinated hydrocarbons</li> </ul>	<ul style="list-style-type: none"> <li>low-molecular organic acids (formic and acetic acids)</li> </ul>	very high differences regarding thermal expansion compared to metallic materials
	<ul style="list-style-type: none"> <li>mineral oils</li> </ul>	<ul style="list-style-type: none"> <li>ammonia gases, amines</li> </ul>	special constructions required
		<ul style="list-style-type: none"> <li>alkalines</li> </ul>	low abrasion resistance
		<ul style="list-style-type: none"> <li>dioxanes</li> </ul>	no elastomer
		<ul style="list-style-type: none"> <li>superheated steam</li> </ul>	
Approval for material	EG VO 1935/2004	EG VO 1935/2004	EG VO 1935/2004
	FDA	FDA	FDA
	3-A	3-A	3-A
	USP Class VI	USP Class VI	USP Class VI

## Technical Information

### Pressure Ranges

Unions acc. to DIN 11864-1/DIN 11853-1 are designed for the following pressure values:

for tubes acc. to DIN 11866, series A to C	
Outer pipe diameter	Pressure
12,7 mm - 41 mm	4,0 MPa (40 bar)
42,4 mm - 104 mm	2,5 MPa (25 bar)

Flange connections acc. to DIN 11864-2/DIN 11853-2 are designed for the following pressure values:

for tubes acc. to DIN 11866, series A to C	
Outer pipe diameter	Pressure
12,7 mm - 41 mm	2,5 MPa (25 bar)
42,4 mm - 104 mm	1,6 MPa (16 bar)
114,3 mm - 154 mm	1,0 MPa (10 bar)

Clamp connections acc. to DIN 11864-3/DIN 11853-3 are designed for the following pressure values:

for tubes acc. to DIN 11866, series A to C	
Outer pipe diameter	Pressure
12,7 mm - 41 mm	4,0 MPa (40 bar)
42,4 mm - 70 mm	2,5 MPa (25 bar)
76,1 mm - 104 mm	1,6 MPa (16 bar)

These pressure values in Mpa (bar) serve as limit values for suitable sealing materials up to 140 °C.

### Design Lengths acc. to DIN 11864 and DIN 11853

AWH offers two lengths:

- the long version acc. to DIN 11864: with pipe connection for orbital welding
- the short version acc. to DIN 11853: for compact system concepts, orbital weldable, but only with special equipment

### Material from DIN 11864 and DIN 11853 acc. to DIN EN 10088-1 and -3

AWH manufactures components of DIN 11864 as a standard in grade 1.4404 acc. to DIN EN 10088-1 and -3. Components of DIN 11853 are manufactured in grades 1.4301 and 1.4404 acc. to DIN EN 10088-1 and -3. Further grades, as indicated in DIN 11864 and DIN 11853, are available upon request.

### Surfaces

Surfaces are manufactured according to DIN 11864 and DIN 11853 Standard hygienic class H3 (media-affected inner surfaces average surface finish  $RA \leq 0,8 \mu\text{m}$ , external surfaces average surface finish  $RA \leq 1,6 \mu\text{m}$ ). The welding areas of the edges of a workpiece are manufactured according to DIN ISO 13715. Further hygienic classes can be arranged separately according to DIN 11864 table 14 and DIN 11853 table 11. Other surfaces, such as electro-polished, blasted or veiled surfaces can be manufactured upon request.

### Pipe Connections according to:

1. DIN 11850:2009-06: Tubes and pipes made of stainless steels for the food industry
2. DIN EN ISO 1127: Stainless steel pipes
3. ISO 2037: Metal pipes and fittings - Stainless steel tubes for the food industry
4. ASME BPE 2009: Bioprocessing equipment
5. DIN 11866: Pipes made of stainless steel for the aseptic, chemical and pharmaceutical industry



Armaturenwerk Hötensleben GmbH  
Schulstr. 5-6  
D-39393 Hötensleben

Tel.: +49 39405 92-0  
Fax: +49 39405 92-111  
e-mail: info@awh.de  
<http://www.awh.de>

## NEUMO-Ehrenberg-Gruppe

Armaturenwerk Hötensleben GmbH (Germany)

Gebr. Rieger GmbH & Co. KG (Germany)

NEUMO GmbH & Co. KG (Germany)

Damstahl GmbH & Co. KG (Germany)

NEUMO UK Ltd. (United Kingdom)

Damstahl a/s (Norway)

Damstahl a/s (Denmark)

Damstahl AB (Sweden)

NEUMO GUS (Russia)

NEUMO Polska Sp. z.o.o. (Poland)

NEUMO GUS Kransodar (Russia)

Damstahl AG (Switzerland)

Herrli AG (Switzerland)

NEUMO-EGMO Spain SL (Spain)

NEUMO VARGUS (China)

NEUMO Representative Offices Vietnam

VNE Corporation (USA)

AWH Vienna (Austria)

EGMO Ltd. (Israel)

AWH Lyon (France)

NEUMO Mühendislik ve

NEUMO Budapest Kft. (Hungary)